

Recombinant Mouse ESM1/Endocan Protein (Human Cells, His Tag)



Catalog Number:PKSM041193

Note: Centrifuge before opening to ensure complete recovery of vial contents.

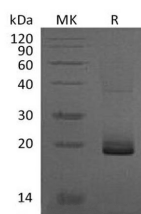
Description

Synonyms	Endothelial cell-specific molecule 1;ESM-1;Esm1;Endocan
Species	Mouse
Expression Host	HEK293 Cells
Sequence	Trp20-Arg184
Accession	Q9QYY7
Calculated Molecular Weight	19.0 kDa
Observed molecular weight	20 kDa
Tag	C-His

Properties

Purity	> 95 % as determined by reducing SDS-PAGE.
Endotoxin	< 1.0 EU per µg of the protein as determined by the LAL method.
Storage	Generally, lyophilized proteins are stable for up to 12 months when stored at -20 to -80°C. Reconstituted protein solution can be stored at 4-8°C for 2-7 days. Aliquots of reconstituted samples are stable at < -20°C for 3 months.
Shipping	This product is provided as lyophilized powder which is shipped with ice packs.
Formulation	Lyophilized from a 0.2 µm filtered solution of PBS, pH 7.4. Normally 5 % - 8 % trehalose, mannitol and 0.01% Tween80 are added as protectants before lyophilization. Please refer to the specific buffer information in the printed manual.
Reconstitution	Please refer to the printed manual for detailed information.

Data



> 95 % as determined by reducing SDS-PAGE.

Background

Endothelial cell-specific molecule-1 (ESM-1)—so-called endocan—is a novel endothelium derived soluble dermatan sulfate proteoglycan (PG) that is constitutively expressed by endothelial cells in lungs and kidneys and can be detected in human blood. It is encoded by the ESM1 gene. The expression of this gene is regulated by several cytokines and growth factors, such as vascular endothelial growth factor. Inflammatory cytokines, such as interleukin (IL)-1 β and tumor necrosis factor (TNF)- α , stimulate the upregulation of endocan mRNA and the secretion of endocan from endothelial cells. The binding of circulating endocan to leukocyte ligand for ICAM-1—Lymphocyte Function-associated Antigen-1 (LFA-1) and to leukocyte ligand for VCAM-1—Very Late Antigen-4 (VLA-4) is important in leukocyte adhesion and interaction with activated endothelium. Endocan is a key player in the regulation of major processes such as cell adhesion

For Research Use Only

A Reliable Research Partner in Life Science and Medicine

Toll-free: 1-888-852-8623

Tel: 1-832-243-6086

Fax: 1-832-243-6017

Web: www.elabscience.com

Email: techsupport@elabscience.com

Recombinant Mouse ESM1/Endocan Protein (Human Cells, His Tag)



Catalog Number:PKSM041193

in inflammatory disorders and tumor progression.

For Research Use Only

A Reliable Research Partner in Life Science and Medicine

Toll-free: 1-888-852-8623

Tel: 1-832-243-6086

Fax: 1-832-243-6017

Web: www.elabscience.com

Email: techsupport@elabscience.com