

## FITC Anti-Mouse CD161/NK1.1 Antibody[PK136]

Catalog Number: E-AB-F0987C

Note: Centrifuge before opening to ensure complete recovery of vial contents.

### Description

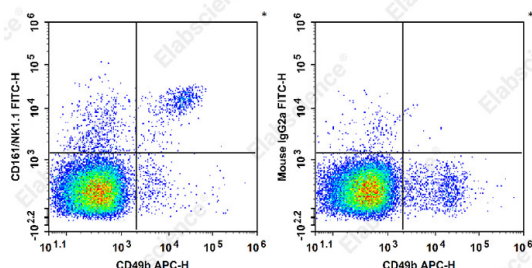
Reactivity	Mouse
Host	Mouse
Isotype	Mouse IgG2a, κ
Clone No.	PK136
Isotype Control	FITC Mouse IgG2a, κ Isotype Control[C1.18.4] [Product E-AB-F09802C]
Conjugation	FITC
Conjugation Information	FITC is designed to be excited by the Blue laser (488 nm) and detected using an optical filter centered near 530 nm (e.g., a 525/40 nm bandpass filter).
Storage Buffer	Phosphate buffered solution, pH 7.2, containing 0.09% stabilizer.

### Applications

### Recommended usage

FCM	Each lot of this antibody is quality control tested by flow cytometric analysis. <b>The amount of the reagent is suggested to be used 5 μL of antibody per test (million cells in 100 μL staining volume or per 100 μL of whole blood).</b> Please check your vial before the experiment. Since applications vary, the appropriate dilutions must be determined for individual use.
-----	---

### Data



Staining of C57BL/6 murine splenocytes with APC Anti-Mouse CD49b/pan-NK cells Antibody[DX5] and FITC Anti-Mouse CD161/NK1.1 Antibody[PK136] (left) or FITC Mouse IgG2a, κ Isotype Control (right). Total viable cells were used for analysis.

### Preparation & Storage

Storage	Keep as concentrated solution. This product can be stored at 2-8°C for 24 months. Please protected from prolonged exposure to light and do not freeze.
Shipping	Ice bag

### Antigen Information

Alternate Names	CD161 antigen-like family member C;CD161;NK1.1;CD161c;Killer cell lectin-like receptor subfamily B member 1C;Klrb1c;Ly-55c;NKR-P1 40;NKR-P1.9;NKR-P1C
Uniprot ID	P27814;P27812;Q99JB4

### For Research Use Only

**Gene ID**

17059;80782

**Background**

NK-1.1 surface antigen, also known as CD161b/CD161c and Ly-55, is encoded by the NKR-P1B/NKR-P1C gene. It is expressed on NK cells and NK-T cells in some mouse strains, including C57BL/6, FVB/N, and NZB, but not AKR, BALB/c, CBA/J, C3H, DBA/1, DBA/2, NOD, SJL, and 129. Expression of NKR-P1C antigen has been correlated with lysis of tumor cells in vitro and rejection of bone marrow allografts in vivo. NK-1.1 has also been shown to play a role in NK cell activation, IFN- $\gamma$  production, and cytotoxic granule release. NK-1.1 and DX5 are commonly used as mouse NK cell markers.