

# UCHL1 Polyclonal Antibody

catalog number: E-AB-19179

**Note:** Centrifuge before opening to ensure complete recovery of vial contents.

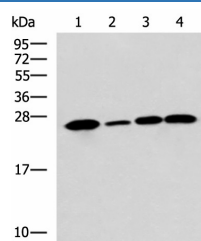
## Description

<b>Reactivity</b>	Human;Mouse;Rat
<b>Immunogen</b>	Fusion protein of human UCHL1
<b>Host</b>	Rabbit
<b>Isotype</b>	IgG
<b>Purification</b>	Antigen affinity purification
<b>Conjugation</b>	Unconjugated
<b>buffer</b>	Phosphate buffered solution, pH 7.4, containing 0.05% stabilizer and 50% glycerol.

## Applications

Applications	Recommended Dilution
<b>WB</b>	1:1000-1:5000
<b>IHC</b>	1:50-1:200

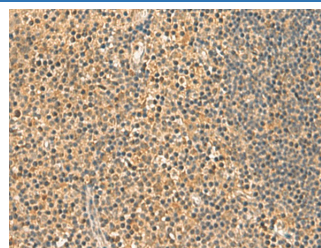
## Data



Western blot analysis of Human cerebrum tissue A172 cell  
Mouse brain tissue Rat brain tissue lysates using UCHL1  
Polyclonal Antibody at dilution of 1:900

**Observed-MV:Refer to figures**

**Calculated-MV:25 kDa**



Immunohistochemistry of paraffin-embedded Human tonsil  
tissue using UCHL1 Polyclonal Antibody at dilution of  
1:60(×200)

## Preparation & Storage

<b>Storage</b>	Store at -20°C Valid for 12 months. Avoid freeze / thaw cycles.
<b>Shipping</b>	The product is shipped with ice pack, upon receipt, store it immediately at the temperature recommended.

## Background

UCHL1(Ubiquitin carboxyl-terminal hydrolase isozyme L1) is a member of a gene family whose products hydrolyze small C-terminal adducts of ubiquitin to generate the ubiquitin monomer. Expression of UCHL1 is highly specific to neurons and to cells of the diffuse neuroendocrine system and their tumors. It is present in all neurons. This protein is present in brain at concentrations at least 50 times greater than in other organs and is a major protein component of neuronal cytoplasm. And UCHL1 is a Parkinson's disease susceptibility gene.

## For Research Use Only