

ALDH8A1 Polyclonal Antibody

Catalog Number: E-AB-10770



Note: Centrifuge before opening to ensure complete recovery of vial contents.

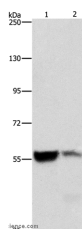
Description

Reactivity	Human, Mouse
Immunogen	Recombinant protein of human ALDH8A1
Host	Rabbit
Isotype	IgG
Purification	Affinity purification
Conjugation	Unconjugated
Formulation	PBS with 0.05% sodium azide and 50% glycerol, PH7.4

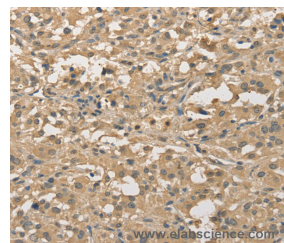
Applications Recommended Dilution

WB	1:500-1:2000
IHC	1:25-1:100

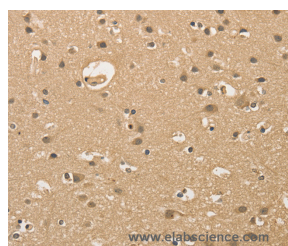
Data



Western Blot analysis of Mouse liver and kidney tissue using ALDH8A1 Polyclonal Antibody at dilution of 1:550
Calculated Mw: 53kDa



Immunohistochemistry of paraffin-embedded Human thyroid cancer using ALDH8A1 Polyclonal Antibody at dilution of 1:30



Immunohistochemistry of paraffin-embedded Human brain using ALDH8A1 Polyclonal Antibody at dilution of 1:30

Preparation & Storage

Storage Store at -20°C. Avoid freeze / thaw cycles.

Background

This protein belongs to the aldehyde dehydrogenases family of proteins. It plays a role in a pathway of 9-cis-retinoic acid biosynthesis in vivo. This enzyme converts 9-cis-retinal into the retinoid X receptor ligand 9-cis-retinoic acid, and has approximately 40-fold higher activity with 9-cis-retinal than with all-trans-retinal. Therefore, it is the first known

For Research Use Only

A Reliable Research Partner in Life Science and Medicine

Toll-free: 1-888-852-8623

Web: www.elabscience.com

Tel: 1-832-243-6086

Email: techsupport@elabscience.com

Fax: 1-832-243-6017

ALDH8A1 Polyclonal Antibody

Catalog Number: E-AB-10770



aldehyde dehydrogenase to show a preference for 9-cis-retinal relative to all-trans-retinal. Three transcript variants encoding distinct protein isoforms have been identified for this gene.

For Research Use Only

A Reliable Research Partner in Life Science and Medicine

Toll-free: 1-888-852-8623

Tel: 1-832-243-6086

Fax: 1-832-243-6017

Web: www.elabscience.com

Email: techsupport@elabscience.com