

MMP2 Monoclonal Antibody

catalog number: E-AB-22242

Note: Centrifuge before opening to ensure complete recovery of vial contents.

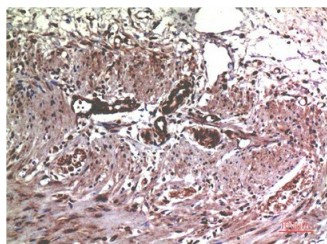
Description

| | |
|---------------------|-------------------------------------------------------------------------------------------------------------|
| Reactivity | Human;Mouse;Rat |
| Immunogen | Synthetic Peptide of MMP2 |
| Host | Mouse |
| Isotype | IgG |
| Clone | 1H1 |
| Purification | Protein A purification |
| Buffer | Phosphate buffered solution, pH 7.4, containing 0.05% stabilizer, 0.5% protein protectant and 50% glycerol. |

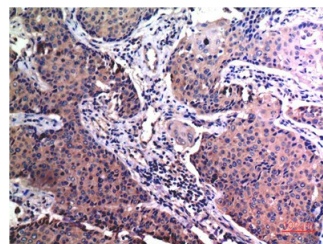
Applications Recommended Dilution

| | |
|------------|-----------|
| IHC | 1:100-200 |
|------------|-----------|

Data



Immunohistochemistry of paraffin-embedded Human colon carcinoma tissue using MMP2 Monoclonal Antibody at dilution of 1:200.



Immunohistochemistry of paraffin-embedded Human breast carcinoma tissue using MMP2 Monoclonal Antibody at dilution of 1:200.

Preparation & Storage

| | |
|-----------------|----------------------------------------------------------------------------------------------------------|
| Storage | Store at -20°C Valid for 12 months. Avoid freeze / thaw cycles. |
| Shipping | The product is shipped with ice pack, upon receipt, store it immediately at the temperature recommended. |

Background

Ubiquitous metalloproteinase that is involved in diverse functions such as remodeling of the vasculature, angiogenesis, tissue repair, tumor invasion, inflammation, and atherosclerotic plaque rupture. As well as degrading extracellular matrix proteins, can also act on several nonmatrix proteins such as big endothelial 1 and beta-type CGRP promoting vasoconstriction. Also cleaves KISS at a Gly-Leu bond. Appears to have a role in myocardial cell death pathways. Contributes to myocardial oxidative stress by regulating the activity of GSK3beta. Cleaves GSK3beta in vitro. PEX, the C-terminal non-catalytic fragment of MMP2, possesses anti-angiogenic and anti-tumor properties and inhibits cell migration and cell adhesion to FGF2 and vitronectin. Ligand for integrin α 5 β 3 on the surface of blood vessels.

For Research Use Only