

Recombinant Human CDO1 Protein (His Tag)

Catalog Number: PKSH032330

Note: Centrifuge before opening to ensure complete recovery of vial contents.

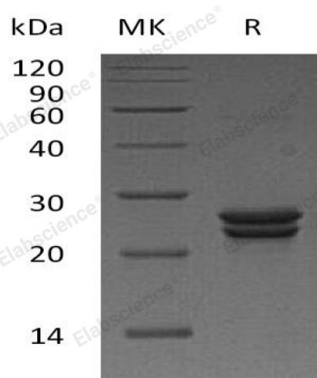
Description

Species	Human
Source	E.coli-derived Human CDO1 protein Met 1-Asn200, with an N-terminal His
Calculated MW	25.1 kDa
Observed MW	20-28 kDa
Accession	Q16878
Bio-activity	Not validated for activity

Properties

Purity	> 95 % as determined by reducing SDS-PAGE.
Concentration	Subject to label value.
Endotoxin	< 1.0 EU per µg of the protein as determined by the LAL method.
Storage	Store at < -20°C, stable for 6 months. Please minimize freeze-thaw cycles.
Shipping	This product is provided as liquid. It is shipped at frozen temperature with blue ice/gel packs. Upon receipt, store it immediately at < -20°C.
Formulation	Supplied as a 0.2 µm filtered solution of 20mM Tris-HCl, 1mM DTT, 10% Glycerol, pH 8.0.

Data



> 95 % as determined by reducing SDS-PAGE.

Background

Cysteine Dioxygenase Type 1 (CDO1) is a mammalian non-heme iron enzyme that belongs to the cysteine dioxygenase family. CDO1 is highly expressed in the liver and placenta, and has a low expression in heart, brain and pancreas. CDO1 can also be detected in hepatoblastoma HepG2 cells. CDO1 catalyzes the conversion of L-cysteine to cysteine sulfinic acid by incorporation of dioxygen. CDO1 is a vital regulator of cellular cysteine concentrations and has an essential role in maintaining the hepatic concentration of intracellular free cysteine within a proper narrow range. CDO1 is able to alter intracellular cysteine levels and glutathione levels.

For Research Use Only

Toll-free: 1-888-852-8623
Web: www.elabscience.com

Tel: 1-832-243-6086
Email: techsupport@elabscience.com

Fax: 1-832-243-6017