

## Recombinant CD239/BCAM Monoclonal Antibody

catalog number: **AN301706L**

**Note:** Centrifuge before opening to ensure complete recovery of vial contents.

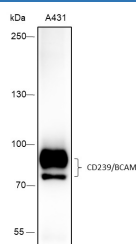
### Description

<b>Reactivity</b>	Human;
<b>Immunogen</b>	Recombinant human CD239/BCAM fragment
<b>Host</b>	Rabbit
<b>Isotype</b>	IgG, $\kappa$
<b>Clone</b>	A414
<b>Purification</b>	Protein A purified
<b>Buffer</b>	PBS, 50% glycerol, 0.05% Proclin 300, 0.05% protein protectant.

### Applications

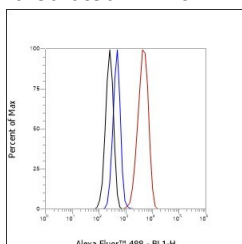
Applications	Recommended Dilution
<b>WB</b>	1:500-1:2000
<b>IHC</b>	1:50-1:100
<b>FCM</b>	1:50-1:100

### Data

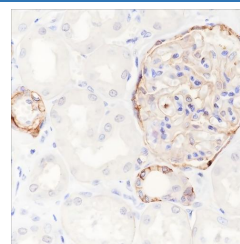


Western Blot with CD239/BCAM Monoclonal Antibody at dilution of 1:2000. Lane 1: A431

**Observed-MW:85,88 kDa**  
**Calculated-MW:67 kDa**



Flow cytometric analysis of human CD239/BCAM expression on HeLa cells. Cells were stained with purified anti-Human CD239/BCAM, then a Alexa Fluor 488-conjugated second step antibody. The histogram were derived from events with the forward and side light-scatter characteristics of intact cells.



Immunohistochemistry of paraffin-embedded Human kidney using CD239/BCAM Monoclonal Antibody at dilution of 1:100.

### Preparation & Storage

<b>Storage</b>	Store at -20°C Valid for 12 months. Avoid freeze / thaw cycles.
<b>Shipping</b>	Ice bag

### Background

### For Research Use Only

Toll-free: 1-888-852-8623  
Web: [www.elabscience.com](http://www.elabscience.com)

Tel: 1-832-243-6086  
Email: [techsupport@elabscience.com](mailto:techsupport@elabscience.com)

Fax: 1-832-243-6017

Rev. V1.0

This gene encodes Lutheran blood group glycoprotein, a member of the immunoglobulin superfamily and a receptor for the extracellular matrix protein, laminin. This protein may play a role in epithelial cell cancer and in vaso-occlusion of red blood cells in sickle cell disease.