

## Recombinant Cathepsin D Monoclonal Antibody

catalog number: **AN301018L**

**Note:** Centrifuge before opening to ensure complete recovery of vial contents.

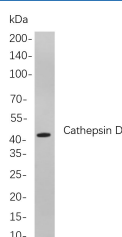
### Description

<b>Reactivity</b>	Human;Mouse;Rat
<b>Immunogen</b>	Recombinant Human Cathepsin D protein
<b>Host</b>	Rabbit
<b>Isotype</b>	IgG, $\kappa$
<b>Clone</b>	B769
<b>Purification</b>	Protein A
<b>Buffer</b>	PBS, 50% glycerol, 0.05% Proclin 300, 0.05% protein protectant.

### Applications

Applications	Recommended Dilution
IHC	1:200-1:1000
WB	1:1000-1:5000
IF	1:200-1:1000
ELISA	1:5000-1:20000
IP	1:50-1:200,

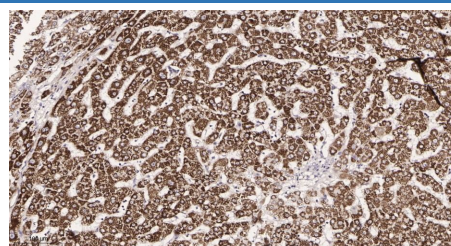
### Data



Western Blot with Recombinant Cathepsin D Monoclonal Antibody at dilution of 1:1000 dilution. Lane A: A431 cells.

**Observed-MW:44 kDa**

**Calculated-MW:44 kDa**



Immunohistochemistry of paraffin-embedded human liver tissue using Recombinant Cathepsin D Monoclonal Antibody at dilution of 1:200.

### Preparation & Storage

<b>Storage</b>	Store at -20°C Valid for 12 months. Avoid freeze / thaw cycles.
<b>Shipping</b>	Ice bag

### Background

This gene encodes a member of the A1 family of peptidases. The encoded preproprotein is proteolytically processed to generate multiple protein products. These products include the cathepsin D light and heavy chains, which heterodimerize to form the mature enzyme. This enzyme exhibits pepsin-like activity and plays a role in protein turnover and in the proteolytic activation of hormones and growth factors. Mutations in this gene play a causal role in neuronal ceroid lipofuscinosis-10 and may be involved in the pathogenesis of several other diseases, including breast cancer and possibly Alzheimer's disease.

### For Research Use Only

Toll-free: 1-888-852-8623  
Web: [www.elabscience.com](http://www.elabscience.com)

Tel: 1-832-243-6086  
Email: [techsupport@elabscience.com](mailto:techsupport@elabscience.com)

Fax: 1-832-243-6017

Rev. V1.2