

## Elab Fluor® Violet 450 Anti-Human CD3 Antibody[HIT3b]

Catalog Number: GFH00644Q

**Note:** Centrifuge before opening to ensure complete recovery of vial contents.

### Description

|                         |  |
|-------------------------|--|
| Reactivity              | Human  |
| Host                    | Mouse  |
| Isotype                 | Mouse IgG1   |
| Clone No.               | HIT3b  |
| Isotype Control         | Elab Fluor® Violet 450 Mouse IgG1, κ Isotype Control[MOPC-21] [Product GFH09792Q]  |
| Conjugation             | Elab Fluor® Violet 450   |
| Conjugation Information | Elab Fluor® Violet 450 is designed to be excited by the violet laser (405 nm) and detected using an optical filter centered near 450 nm (e.g., a 450/45 nm bandpass filter). |
| Storage Buffer          | Phosphate buffered solution, pH 7.2, containing 0.09% sodium azide.  |

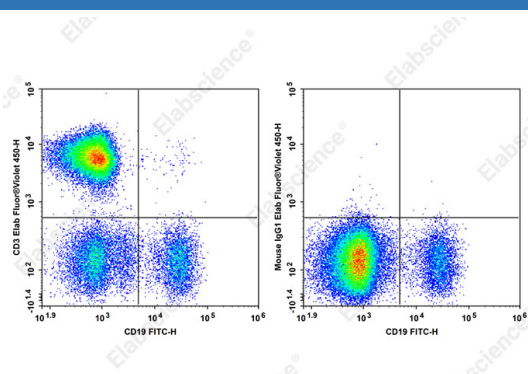
### Applications

### Recommended usage

#### FCM

Each lot of this antibody is quality control tested by flow cytometric analysis. **The amount of the reagent is suggested to be used 5 μL of antibody per test (million cells in 100 μL staining volume or per 100 μL of whole blood).** Please check your vial before the experiment. Since applications vary, the appropriate dilutions must be determined for individual use.

### Data



Staining of normal human peripheral blood cells with Elab

Fluor® Violet 450 Anti-Human CD3 Antibody[HIT3b] and FITC Anti-Human CD19 Antibody[CB19] (left) or Elab Fluor® Violet 450 Mouse IgG1, κ Isotype Control (right). Cells in the lymphocytes gate were used for analysis.

### Preparation & Storage

|          |   |
|----------|---|
| Storage  | Keep as concentrated solution.<br>This product can be stored at 2-8°C for 12 months. Please protected from prolonged exposure to light and do not freeze. |
| Shipping | Ice bag   |

### Antigen Information

|                 |  |
|-----------------|--|
| Alternate Names | T-cell surface glycoprotein CD3 epsilon chain;CD3E;T-cell surface antigen T3/Leu-4 epsilon chain;CD3e;CD3E;T3E;CD3抗体;CD3流式抗体;人CD3;人CD3抗体;人CD3流式抗体;GFH00644 |
|-----------------|--|

### For Research Use Only

Tel: 400-999-2100

Web: [www.elabscience.cn](http://www.elabscience.cn)

Email: [techsupport@elabscience.cn](mailto:techsupport@elabscience.cn)

Rev. V1.3

**Uniprot ID**

P07766

**Gene ID**

916

**Background**

CD3ε is a 20 kD chain of the CD3/T-cell receptor (TCR) complex which is composed of two CD3ε, one CD3γ, one CD3δ, one CD3ζ (CD247), and a T-cell receptor (α/β or γ/δ) heterodimer. It is found on all mature T lymphocytes, NK-T cells, and some thymocytes.

CD3, also known as T3, is a member of the immunoglobulin superfamily that plays a role in antigen recognition, signal transduction, and T cell activation.