

PD-L1/B7-H1/CD274 Monoclonal Antibody

catalog number: **AN200150P**

Note: Centrifuge before opening to ensure complete recovery of vial contents.

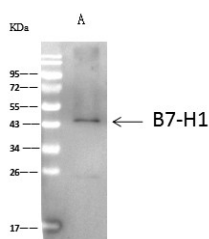
Description

Reactivity	Human
Immunogen	Recombinant Human PD-L1/B7-H1/CD274 Protein
Host	Mouse
Isotype	IgG1
Clone	A1002
Purification	Protein A
Buffer	0.2 µm filtered solution in PBS

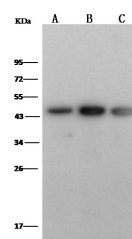
Applications Recommended Dilution

WB	1:500-1:2000
IP	1-4 µL/mg of lysate

Data



Immunoprecipitation analysis using 4µL anti-B7-H1 mouse Monoclonal Antibody and 60 µg of Immunomagnetic beads Protein A/G. Western blot was performed from the immunoprecipitate using B7-H1 mouse Monoclonal Antibody at a dilution of 1:100. Lane A: 0.5 mg K562 Whole Cell Lysate
Observed-MW: 45 kDa
Calculated-MW: 33 kDa



Western Blot with PD-L1/B7-H1/CD274 Monoclonal Antibody at dilution of 1:500. Lane A: K562 Whole Cell Lysate, Lane B: THP1 Whole Cell Lysate, Lane C: Raji Whole Cell Lysate, Lysates/proteins at 30 µg per lane.
Observed-MW: 45 kDa
Calculated-MW: 33 kDa

Preparation & Storage

Storage	This antibody can be stored at 2°C-8°C for one month without detectable loss of activity. Antibody products are stable for twelve months from date of receipt when stored at -20°C to -80°C. Preservative-Free. Avoid repeated freeze-thaw cycles.
Shipping	Ice bag

Background

Human B7 homolog 1 (B7-H1), also called programmed death ligand 1 (PD-L1) and programmed cell death 1 ligand 1 (PDCD1L1), is a member of the growing B7 family of immune proteins that provide signals for both stimulating and inhibiting T cell activation. Other family members include B7-1, B7-2, B7-H2, PDL2 and B7-H3. B7 proteins are members of the immunoglobulin (Ig) superfamily.

For Research Use Only