

## Recombinant Phospho-Src Family (Tyr416) Monoclonal Antibody

catalog number: **AN301314L**

**Note:** Centrifuge before opening to ensure complete recovery of vial contents.

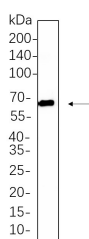
### Description

<b>Reactivity</b>	Human;Mouse;Rat
<b>Immunogen</b>	A synthetic peptide corresponding to residues around (Tyr416) of Human Phospho-Src Family
<b>Host</b>	Rabbit
<b>Isotype</b>	IgG, $\kappa$
<b>Clone</b>	8C3
<b>Purification</b>	Protein A
<b>Buffer</b>	PBS, 50% glycerol, 0.05% Proclin 300, 0.05% protein protectant.

### Applications Recommended Dilution

<b>WB</b>	1:2000-1:10000
-----------	----------------

### Data



Western Blot with Recombinant Phospho-Src Family (Tyr416) Monoclonal Antibody at dilution of 1:1000 dilution.

Lane A: NIH-3T3 whole cell lysate.

**Observed-MW:60 kDa**

**Calculated-MW:58-61 kDa**

### Preparation & Storage

<b>Storage</b>	Store at -20°C Valid for 12 months. Avoid freeze / thaw cycles.
<b>Shipping</b>	Ice bag

### Background

SRC Family Negative Regulatory Phosphorylation Site belongs to the protein kinase superfamily, Tyr protein kinase family, SRC subfamily. It contains one protein kinase domain, one SH2 domain and one SH3 domain. It may serve as part of a signaling pathway coupling the Fc receptor to the activation of the respiratory burst and may also contribute to neutrophil migration and may regulate the degranulation process of neutrophils. SRC Family Negative Regulatory Phosphorylation Site is expressed predominantly in cells of the myeloid and B lymphoid lineages. There are two named isoforms.

### For Research Use Only