

## Elab Fluor® 647 Anti-Human HLA-DR Antibody[LN3]

**Catalog Number:** AN00960M

**Note:** Centrifuge before opening to ensure complete recovery of vial contents.

### Description

<b>Reactivity</b>	Human
<b>Host</b>	Mouse
<b>Isotype</b>	Mouse IgG2b, κ
<b>Clone No.</b>	LN3
<b>Isotype Control</b>	Elab Fluor® 647 Mouse IgG2b, κ Isotype Control[MPC-11] [Product E-AB-F09812M]
<b>Conjugation</b>	Elab Fluor® 647
<b>Conjugation Information</b>	Elab Fluor® 647 is designed to be excited by the Red laser (627-640 nm) and detected using an optical filter centered near 670 nm (e.g., a 660/20 nm bandpass filter).
<b>Storage Buffer</b>	Phosphate buffered solution, pH 7.2, containing 0.09% stabilizer.

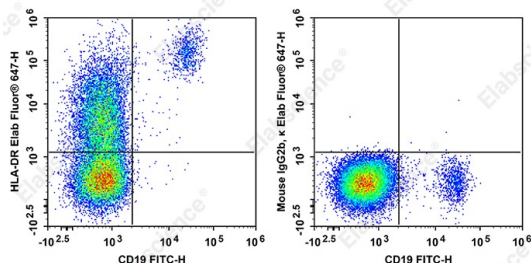
### Applications

### Recommended usage

#### FCM

Each lot of this antibody is quality control tested by flow cytometric analysis. **The amount of the reagent is suggested to be used 5 μL of antibody per test (million cells in 100 μL staining volume or per 100 μL of whole blood).** Please check your vial before the experiment. Since applications vary, the appropriate dilutions must be determined for individual use.

### Data



Staining of normal human peripheral blood cells with FITC

Anti-Human CD19 Antibody and Elab Fluor® 647 Anti-Human HLA-DR Antibody[LN3] (left) or Elab Fluor® 647 Mouse IgG2b, κ Isotype Control (right). Cells in the lymphocytes gate were used for analysis.

### Preparation & Storage

<b>Storage</b>	Keep as concentrated solution. This product can be stored at 2-8°C for 12 months. Please protected from prolonged exposure to light and do not freeze.
<b>Shipping</b>	Ice bag

### Antigen Information

<b>Alternate Names</b>	Major Histocompatibility Class II;MHC class II
<b>Uniprot ID</b>	P01903
<b>Gene ID</b>	3122

### For Research Use Only

Toll-free: 1-888-852-8623  
Web: [www.elabscience.com](http://www.elabscience.com)

Tel: 1-832-243-6086  
Email: [techsupport@elabscience.com](mailto:techsupport@elabscience.com)

Fax: 1-832-243-6017

Rev. V1.3

## Background

The LN3 monoclonal antibody reacts with the HLA-DR antigen, a member of MHC class II molecules. HLA-DR is a heterodimeric cell surface glycoprotein comprised of a 36 kD  $\alpha$  (heavy) chain and a 27 kD  $\beta$  (light) chain. It is expressed on B cells, activated T cells, monocytes/macrophages, dendritic cells and other non-professional APCs. In conjunction with the CD3/TCR complex and CD4 molecules, HLA-DR is critical for efficient peptide presentation to CD4+ T cells.