

Elab Fluor® 647 Anti-Human/Mouse Integrin β 7 Antibody[FIB504]

Catalog Number: AN00571M

Note: Centrifuge before opening to ensure complete recovery of vial contents.

Description

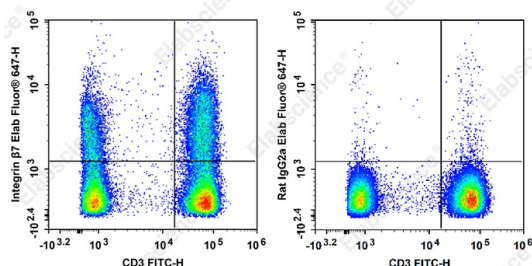
Reactivity	Human, Mouse
Host	Rat
Isotype	Rat IgG2a, κ
Clone No.	FIB504
Isotype Control	Elab Fluor® 647 Rat IgG2a, κ Isotype Control[2A3] [Product E-AB-F09832M]
Conjugation	Elab Fluor® 647
Conjugation Information	Elab Fluor® 647 is designed to be excited by the Red laser (627-640 nm) and detected using an optical filter centered near 670 nm (e.g., a 660/20 nm bandpass filter).
Storage Buffer	Phosphate buffered solution, pH 7.2, containing 0.09% stabilizer.

Applications

Recommended usage

FCM Each lot of this antibody is quality control tested by flow cytometric analysis. **The amount of the reagent is suggested to be used 5 μ L of antibody per test (million cells in 100 μ L staining volume or per 100 μ L of whole blood).** Please check your vial before the experiment. Since applications vary, the appropriate dilutions must be determined for individual use.

Data



Staining of normal human peripheral blood cells with Elab Fluor® 647 Anti-Human Integrin β 7 Antibody[FIB504] (filled gray histogram) or Elab Fluor® 647 Rat IgG2a, κ Isotype Control (empty black histogram). Cells in the lymphocytes gate were used for analysis.

Preparation & Storage

Storage	Keep as concentrated solution. This product can be stored at 2-8°C for 24 months. Please protected from prolonged exposure to light and do not freeze.
Shipping	Ice bag

Antigen Information

Alternate Names	VI 6T-101;VI A024;Integrin Beta7;IntegrinBeta7;Integrin B7;IntegrinB7
Uniprot ID	P26010,P26011
Gene ID	369516421

For Research Use Only

Background

Integrin $\beta 7$ is a 130 kD glycoprotein also known as integrin βp . It is a member of the Ig superfamily. In association with integrin $\alpha 4$ or αE chain, $\beta 7$ forms $\alpha 4/\beta 7$ or $\alpha E/\beta 7$ heterodimer. $\alpha 4/\beta 7$ (CD49d/ $\beta 7$, LPAM-1) is expressed on the majority of peripheral lymphocytes, on small subsets of thymocytes, and bone marrow progenitors. LPAM-1 binds to several ligands, VCAM-1, MAdCAM-1 and fibronectin, and is involved in lymphocyte adhesion and some hematopoietic progenitor cells migration. $\alpha E/\beta 7$ (CD103/ $\beta 7$, $\alpha IEL/\beta 7$) is expressed on intestinal intraepithelial lymphocytes (IEL), dendritic epidermal T cells, T regulatory cells, a subset of CD8+ T cells in lymph nodes and lamina propria. CD103/ $\beta 7$ complex is thought to play a role in lymphocyte retention via interaction with its ligand E-Cadherin.