

Recombinant ALDH7A1 Monoclonal Antibody

catalog number: AN301848L

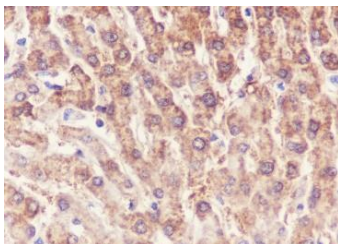
Note: Centrifuge before opening to ensure complete recovery of vial contents.

Description

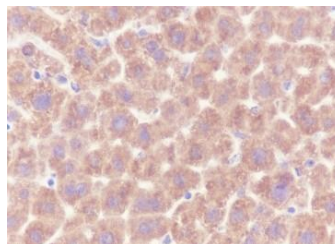
Reactivity	Human;Rat;Mouse
Immunogen	Recombinant human ALDH7A1 fragment
Host	Rabbit
Isotype	IgG, κ
Clone	A560
Purification	Protein A purified
Buffer	PBS, 50% glycerol, 0.05% Proclin 300, 0.05% protein protectant.

Applications Recommended Dilution

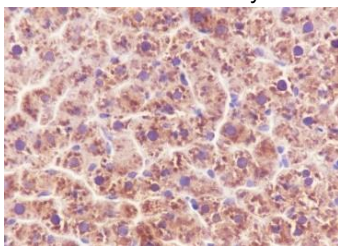
WB	1:1000-1:5000
IHC	1:200-1:1000
IF	1:50
FCM	1:50-1:100
IP	1:50-1:100



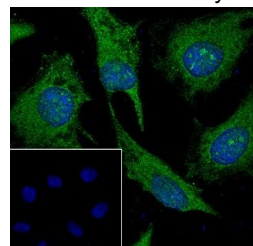
Immunohistochemistry of paraffin-embedded Human liver using ALDH7A1 Monoclonal Antibody at dilution of 1:1000.



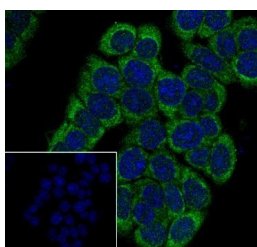
Immunohistochemistry of paraffin-embedded Mouse liver using ALDH7A1 Monoclonal Antibody at dilution of 1:1000.



Immunohistochemistry of paraffin-embedded Rat liver using ALDH7A1 Monoclonal Antibody at dilution of 1:1000.



Immunofluorescent analysis of (100% Ice-cold methanol) fixed HeLa cells using anti-ALDH7A1 Monoclonal Antibody at dilution of 1:50.



Immunofluorescent analysis of (100% Ice-cold methanol) fixed HT-29 cells using anti-ALDH7A1 Monoclonal Antibody at dilution of 1:50.

Preparation & Storage

For Research Use Only

Toll-free: 1-888-852-8623
Web: www.elabscience.com

Tel: 1-832-243-6086
Email: techsupport@elabscience.com

Fax: 1-832-243-6017

Rev. V1.0

Storage

Store at -20°C Valid for 12 months. Avoid freeze / thaw cycles.

Shipping

Ice bag

Background

ALDH7A1 (Alpha-aminoadipic semialdehyde dehydrogenase), also named as ATQ1, belongs to the aldehyde dehydrogenase family. It plays a major role in the detoxification of aldehydes generated by alcohol metabolism and lipid peroxidation. This protein has 4 isoforms produced by alternative splicing.

For Research Use Only

Toll-free: 1-888-852-8623

Web: www.elabscience.com

Tel: 1-832-243-6086

Email: techsupport@elabscience.com

Fax: 1-832-243-6017

Rev. V1.0