

Recombinant Mitofusin-2 Monoclonal Antibody

catalog number: **AN301346L**

Note: Centrifuge before opening to ensure complete recovery of vial contents.

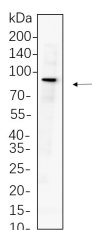
Description

Reactivity	Human;Mouse;Rat
Immunogen	Recombinant Human Mitofusin-2 protein
Host	Rabbit
Isotype	IgG, κ
Clone	B1113
Purification	Protein A
Buffer	PBS, 50% glycerol, 0.05% Proclin 300, 0.05% protein protectant.

Applications

Applications	Recommended Dilution
IHC	1:200-1:1000
WB	1:2000-1:10000
IF	1:200-1:1000
ELISA	1:5000-1:20000

Data



Western Blot with Recombinant Mitofusin-2 Monoclonal Antibody at dilution of 1:1000 dilution. Lane A: HEK293 whole cell lysate.

Observed-MW:86 kDa

Calculated-MW:86 kDa

Preparation & Storage

Storage	Store at -20°C Valid for 12 months. Avoid freeze / thaw cycles.
Shipping	Ice bag

Background

This gene encodes a mitochondrial membrane protein that participates in mitochondrial fusion and contributes to the maintenance and operation of the mitochondrial network. This protein is involved in the regulation of vascular smooth muscle cell proliferation, and it may play a role in the pathophysiology of obesity. Mutations in this gene cause Charcot-Marie-Tooth disease type 2A2, and hereditary motor and sensory neuropathy VI, which are both disorders of the peripheral nervous system. Defects in this gene have also been associated with early-onset stroke. Two transcript variants encoding the same protein have been identified.

For Research Use Only