

Recombinant Alkaline Phosphatase/ALPL Monoclonal Antibody

catalog number: **AN300089P**

Note: Centrifuge before opening to ensure complete recovery of vial contents.

Description

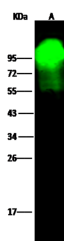
Reactivity	Human
Immunogen	A synthetic peptide corresponding to the center region of the Human Alkaline Phosphatase / ALPL
Host	Rabbit
Isotype	IgG
Clone	11A6
Purification	Protein A
Buffer	0.2 µm filtered solution in PBS

Applications

Recommended Dilution

WB	1:500-1:2000
-----------	--------------

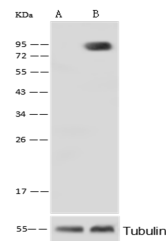
Data



Western Blot with Alkaline Phosphatase / ALPL Monoclonal Antibody at dilution of 1:500. Lane A: HeLa Whole Cell Lysate, Lysates/proteins at 30 µg per lane.

Observed-MW:95 kDa

Calculated-MW:57 kDa



Western Blot with Alkaline Phosphatase / ALPL Monoclonal Antibody at dilution of 1:500. Lane A: ALPL knockout HeLa Whole Cell Lysate, Lane B: HeLa Whole Cell Lysate, Lysates/proteins at 20 µg per lane.

Observed-MW:95 kDa

Calculated-MW:57 kDa

Preparation & Storage

Storage	This antibody can be stored at 2°C-8°C for one month without detectable loss of activity. Antibody products are stable for twelve months from date of receipt when stored at -20°C to -80°C. Preservative-Free. Avoid repeated freeze-thaw cycles.
Shipping	Ice bag

Background

The liver, bone and kidney Alkaline Phosphatase, also known as tissue non-specific Alkaline Phosphatase, is a glycosyl phosphatidylinositol (GPI) anchored protein. Human liver/bone/kidney Alkaline Phosphatase shares 90% amino acid sequence homology with the mouse enzyme.

For Research Use Only