

Recombinant EEA1 Monoclonal Antibody

catalog number: **AN301069L**

Note: Centrifuge before opening to ensure complete recovery of vial contents.

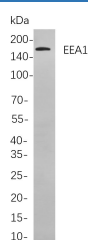
Description

Reactivity	Human;Mouse;Rat
Immunogen	Recombinant Human EEA1 protein
Host	Rabbit
Isotype	IgG, κ
Clone	B824
Purification	Protein A
Buffer	PBS, 50% glycerol, 0.05% Proclin 300, 0.05% protein protectant.

Applications

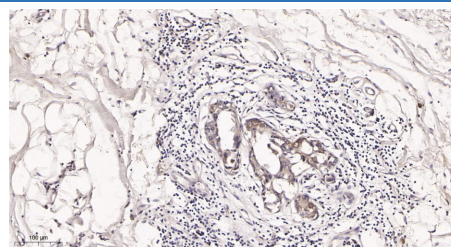
Applications	Recommended Dilution
IHC	1:100-200
WB	1:1000-5000
IF	1:200-1000
ELISA	1:5000-20000

Data



Western Blot with Recombinant EEA1 Monoclonal Antibody at dilution of 1:1000 dilution. Lane A: C6 cells.

Observed-MW:162 kDa
Calculated-MW:162 kDa



Immunohistochemistry of paraffin-embedded human breast ductal cancer tissue using Recombinant EEA1 Monoclonal Antibody at dilution of 1:200.

Preparation & Storage

Storage	Store at -20°C Valid for 12 months. Avoid freeze / thaw cycles.
Shipping	Ice bag

Background

Antibodies against EEA1 are found in sera from patients with subacute cutaneous lupus erythematosus and other autoimmune diseases. **domain:**The FYVE-type zinc finger domain mediates interactions with phosphatidylinositol 3-phosphate. **Binds** phospholipid vesicles containing phosphatidylinositol 3-phosphate and participates in endosomal trafficking. **similarity:**Contains 1 C2H2-type zinc finger. **similarity:**Contains 1 FYVE-type zinc finger. **subunit:**Homodimer. **Binds** STX6. **Binds** RAB5A, RAB5B, RAB5C and RAB22A that have been activated by GTP-binding.

For Research Use Only

Toll-free: 1-888-852-8623
Web: www.elabscience.com

Tel: 1-832-243-6086
Email: techsupport@elabscience.com

Fax: 1-832-243-6017

Rev. V1.2