

Recombinant S100P Monoclonal Antibody

catalog number: **AN300132P**

Note: Centrifuge before opening to ensure complete recovery of vial contents.

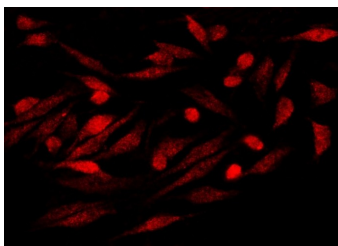
Description

Reactivity	Human
Immunogen	Recombinant Human S100P protein
Host	Rabbit
Isotype	IgG
Clone	A1246
Purification	Protein A
Buffer	0.2 µm filtered solution in PBS

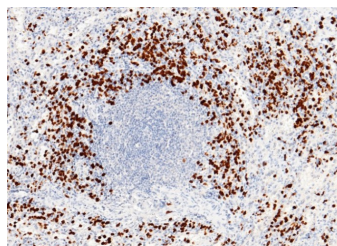
Applications Recommended Dilution

IHC-P	1:100-1:500
ICC/IF	1:20-1:100

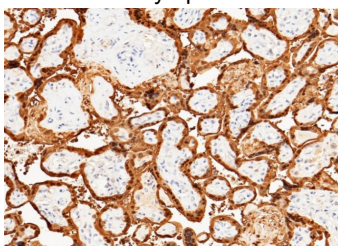
Data



Immunofluorescence analysis of S100P in Hela cells. Cells were fixed with 4% PFA, permeabilized with 0.1% Triton X-100 in PBS, blocked with 10% serum, and incubated with rabbit anti-Y S100P Monoclonal Antibody (dilution ratio 1:60) at 4°C overnight. Then cells were stained with the Alexa Fluor®594-conjugated Goat Anti-rabbit IgG secondary antibody (red). Positive staining was localized to Nucleus and Cytoplasm.



Immunohistochemistry of paraffin-embedded human spleen using S100P Monoclonal Antibody at dilution of 1:200.



Immunohistochemistry of paraffin-embedded human placenta using S100P Monoclonal Antibody at dilution of 1:200.

Preparation & Storage

Storage	This antibody can be stored at 2°C-8°C for one month without detectable loss of activity. Antibody products are stable for twelve months from date of receipt when stored at -20°C to -80°C. Preservative-Free. Avoid repeated freeze-thaw cycles.
Shipping	Ice bag

Background

For Research Use Only

Toll-free: 1-888-852-8623
Web: www.elabscience.com

Tel: 1-832-243-6086
Email: techsupport@elabscience.com

Fax: 1-832-243-6017

Rev. V1.2

The protein encoded by this gene is a member of the S100 family of proteins containing 2 EF-hand calcium-binding motifs. S100 proteins are localized in the cytoplasm and/or nucleus of a wide range of cells, and involved in the regulation of a number of cellular processes such as cell cycle progression and differentiation. S100 genes include at least 13 members which are located as a cluster on chromosome 1q21; however, this gene is located at 4p16. This protein, in addition to binding Ca^{2+} , also binds Zn^{2+} and Mg^{2+} . This protein may play a role in the etiology of prostate cancer.