

Recombinant Synaptophysin/SYP Monoclonal Antibody

catalog number: **AN300291P**

Note: *Centrifuge before opening to ensure complete recovery of vial contents.*

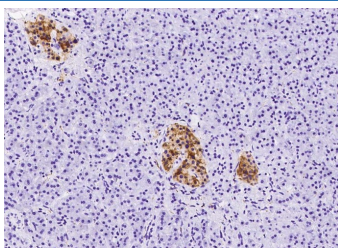
Description

Reactivity	Human
Immunogen	A synthetic peptide corresponding to the C-terminus of the Human Synaptophysin/SYP
Host	Rabbit
Isotype	IgG
Clone	2B9
Purification	Protein A
Buffer	0.2 µm filtered solution in PBS

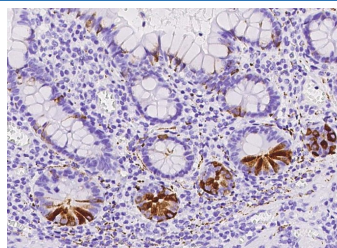
Applications Recommended Dilution

IHC-P	1:100-1:500
--------------	-------------

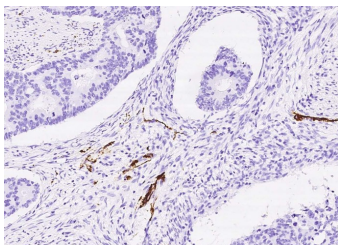
Data



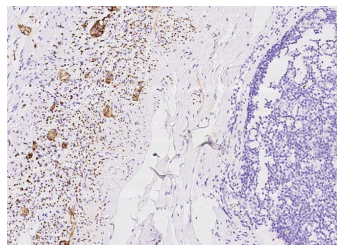
Immunohistochemistry of paraffin-embedded human pancreas using Synaptophysin/SYP Monoclonal Antibody at dilution of 1:200.



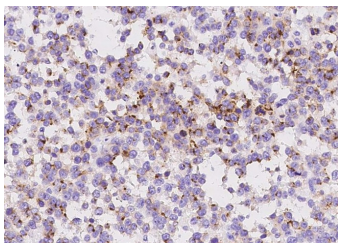
Immunohistochemistry of paraffin-embedded human small intestine using Synaptophysin/SYP Monoclonal Antibody at dilution of 1:200.



Immunohistochemistry of paraffin-embedded human colon carcinoma using Synaptophysin/SYP Monoclonal Antibody at dilution of 1:200.



Immunohistochemistry of paraffin-embedded human appendix using Synaptophysin/SYP Monoclonal Antibody at dilution of 1:200.



Immunohistochemistry of paraffin-embedded human hepatoma using Synaptophysin/SYP Monoclonal Antibody at dilution of 1:200.

Preparation & Storage

For Research Use Only

Toll-free: 1-888-852-8623
Web: www.elabscience.com

Tel: 1-832-243-6086
Email: techsupport@elabscience.com

Fax: 1-832-243-6017

Rev. V1.0

Storage

This antibody can be stored at 2°C-8°C for one month without detectable loss of activity. Antibody products are stable for twelve months from date of receipt when stored at -20°C to -80°C. Preservative-Free. Avoid repeated freeze-thaw cycles.

Shipping

Ice bag

Background

This gene encodes an integral membrane protein of small synaptic vesicles in brain and endocrine cells. The protein also binds cholesterol and is thought to direct targeting of vesicle-associated membrane protein 2 (synaptobrevin) to intracellular compartments. Mutations in this gene are associated with X-linked mental retardation (XLMR).

For Research Use Only

Toll-free: 1-888-852-8623

Web: www.elabscience.com

Tel: 1-832-243-6086

Email: techsupport@elabscience.com

Fax: 1-832-243-6017

Rev. V1.0