

MPC1 Polyclonal Antibody

catalog number: E-AB-92195

Note: Centrifuge before opening to ensure complete recovery of vial contents.

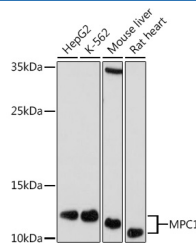
Description

Reactivity	Human;Mouse;Rat
Immunogen	A synthetic peptide of human MPC1
Host	Rabbit
Isotype	IgG
Purification	Affinity purification
Buffer	Phosphate buffered solution, pH 7.4, containing 0.05% stabilizer and 50% glycerol.

Applications

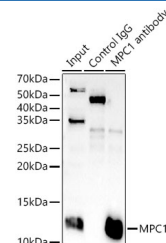
Applications	Recommended Dilution
WB	1:500-1:2000
IP	1:50-1:200

Data



Western blot analysis of extracts of various cell lines using MPC1 Polyclonal Antibody at 1:1000 dilution.

Observed-MW:12 kDa
Calculated-MW:12 kDa



Immunoprecipitation analysis of 300ug extracts of K-562 cells using 3ug MPC1 Polyclonal Antibody. Western blot was performed from the immunoprecipitate using MPC1 Polyclonal Antibody at a dilution of 1:1000.

Observed-MW:12 kDa
Calculated-MW:12 kDa

Preparation & Storage

Storage	Store at -20°C Valid for 12 months. Avoid freeze / thaw cycles.
Shipping	The product is shipped with ice pack, upon receipt, store it immediately at the temperature recommended.

Background

The protein encoded by this gene is part of an MPC1/MPC2 heterodimer that is responsible for transporting pyruvate into mitochondria. The encoded protein is found in the inner mitochondrial membrane. Defects in this gene are a cause of mitochondrial pyruvate carrier deficiency. Several transcript variants, some protein coding and one non-protein coding, have been found for this gene.

For Research Use Only