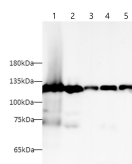


Vinculin Monoclonal Antibody

catalog number: AN005300L

Note: Centrifuge before opening to ensure complete recovery of vial contents.

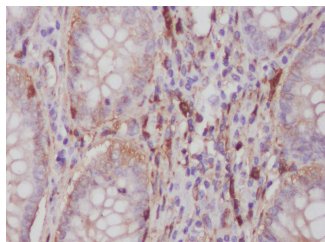
Description	
Reactivity	Human;Mouse;Rat
Immunogen	Recombinant human Vinculin protein expressed by E.coli
Host	Mouse
Isotype	IgG1
Clone	4D4
Purification	Protein A/G Purification
Conjugation	Unconjugated
Buffer	PBS with 0.05% Proclin300, 1% protective protein and 50% glycerol, pH7.4
Applications	Recommended Dilution
WB	1:2000-1:4000
IHC	1:200-1:400
IF	1:200-1:400
Data	



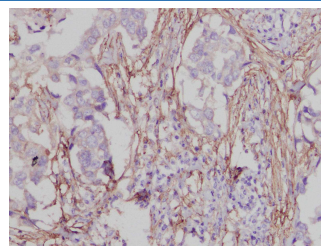
Western blot with Anti Vinculin Monoclonal Antibody at dilution of 1:3000. Lane 1: HeLa cell lysate, Lane 2: 293 cell lysate, Lane 3: Hep G2 cell lysate, Lane 4: NIH/3T3 cell lysate, Lane 5: Mouse heart tissue lysate, Lane 6: Rat heart tissue lysate.

Observed-MW:126 kDa

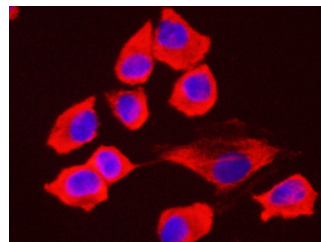
Calculated-MW:124 kDa



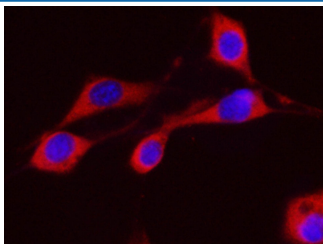
Immunohistochemistry of paraffin-embedded Human colon cancer using Vinculin Monoclonal Antibody at dilution of 1:1000.



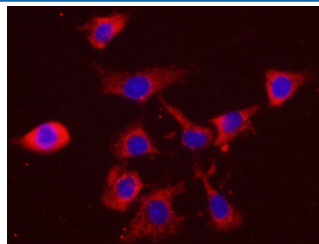
Immunohistochemistry of paraffin-embedded Human breast cancer using Vinculin Monoclonal Antibody at dilution of 1:1000.



Immunofluorescence analysis of HeLa cells using Vinculin Monoclonal Antibody at dilution of 1:200.



Immunofluorescence analysis of NIH/3T3 cells using Vinculin Monoclonal Antibody at dilution of 1:200.



Immunofluorescence analysis of C6 cells using Vinculin Monoclonal Antibody at dilution of 1:200.

Preparation & Storage

Storage

Store at -20°C Valid for 12 months. Avoid freeze / thaw cycles.

Shipping

The product is shipped with ice pack, upon receipt, store it immediately at the temperature recommended.

Background

Vinculin belongs to the vinculin/alpha-catenin family. It is an actin filament (F-actin)-binding protein which involved in cell-matrix adhesion and cell-cell adhesion. Vinculin regulates cell-surface E-cadherin expression and potentiates mechanosensing by the E-cadherin complex. It may also play important roles in cell morphology and locomotion. Vinculin is a 117-kDa, 1,066-amino-acid protein which is ubiquitously expressed. Its splice variant, metavinculin (124 kDa), is muscle-specific.