

PCT Polyclonal Antibody

catalog number: **E-AB-40536**

Note: Centrifuge before opening to ensure complete recovery of vial contents.

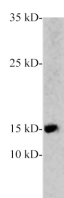
Description

| | |
|---------------------|--|
| Reactivity | Zebrafish |
| Immunogen | Recombinant human PCT protein expressed by E.coli |
| Host | Rabbit |
| Isotype | IgG |
| Purification | Antigen Affinity Purification |
| Buffer | PBS with 0.05% Proclin300, 1% protective protein and 50% glycerol, pH7.4 |

Applications Recommended Dilution

| | |
|-----------|-------------|
| WB | 1:1000-2000 |
|-----------|-------------|

Data



Western blot of Zebrafish whole lysates with anti-PCT rabbit polyclonal antibody at dilution of 1:1000.

Observed-MW:14 kDa

Calculated-MW:14 kDa

Preparation & Storage

| | |
|-----------------|--|
| Storage | Store at -20°C Valid for 12 months. Avoid freeze / thaw cycles. |
| Shipping | The product is shipped with ice pack, upon receipt, store it immediately at the temperature recommended. |

Background

Procalcitonin (PCT) is the peptide precursor of calcitonin, a hormone that is synthesized by the parafollicular C cells of the thyroid. The serum concentration of PCT increases rapidly in patients with systemic nonviral infections. Therefore, PCT is a high

For Research Use Only