

Recombinant Human UBE2J2 Protein (GST Tag)

Catalog Number: PKSH033185

Note: Centrifuge before opening to ensure complete recovery of vial contents.

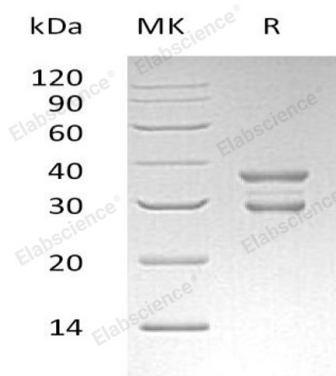
Description

Species	Human
Source	E.coli-derived Human UBE2J2 protein Glu124-Arg224, with an N-terminal GST
Calculated MW	38.0 kDa
Observed MW	30&36 kDa
Accession	Q8N2K1
Bio-activity	Not validated for activity

Properties

Purity	> 95 % as determined by reducing SDS-PAGE.
Concentration	Subject to label value.
Endotoxin	< 1.0 EU per µg of the protein as determined by the LAL method.
Storage	Store at < -20°C, stable for 6 months. Please minimize freeze-thaw cycles.
Shipping	This product is provided as liquid. It is shipped at frozen temperature with blue ice/gel packs. Upon receipt, store it immediately at < -20°C.
Formulation	Supplied as a 0.2 µm filtered solution of 20mM PB, 150mM NaCl, 1mM DTT, pH 7.2.

Data



> 95 % as determined by reducing SDS-PAGE.

Background

Ubiquitin-Conjugating Enzyme E2 J2 (UBE2J2) belongs to the ubiquitin-conjugating enzyme family. UBE2J2 is involved in the ubiquitination. UBE2J2 located in the membrane of the endoplasmic reticulum, catalyzes the covalent attachment of ubiquitin to other proteins. UBE2J2 may play an important role in the selective degradation of misfolded membrane protein from the endoplasmic reticulum.