

## Recombinant Human Semaphorin 3C/SEMA3C Protein (His Tag)

**Catalog Number:** PKSH033017

**Note:** Centrifuge before opening to ensure complete recovery of vial contents.

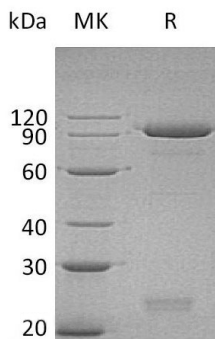
### Description

<b>Species</b>	Human
<b>Source</b>	HEK293 Cells-derived Human Semaphorin 3C;SEMA3C protein Gly21-Ser738, with an C-terminal His
<b>Calculated MW</b>	82.4 kDa
<b>Observed MW</b>	75-120&27KD
<b>Accession</b>	Q99985
<b>Bio-activity</b>	Not validated for activity

### Properties

<b>Purity</b>	> 95 % as determined by reducing SDS-PAGE.
<b>Concentration</b>	Subject to label value.
<b>Endotoxin</b>	< 1.0 EU per µg of the protein as determined by the LAL method.
<b>Storage</b>	Store at < -20°C, stable for 6 months. Please minimize freeze-thaw cycles.
<b>Shipping</b>	This product is provided as liquid. It is shipped at frozen temperature with blue ice/ gel packs. Upon receipt, store it immediately at < - 20°C.
<b>Formulation</b>	Supplied as a 0.2 µm filtered solution of 20mM NaH <sub>2</sub> PO <sub>4</sub> , 150mM NaCl, 0.1M Arginine, 0.1M Glu, 10% Glycerol, 0.01% Tween20, 5% Trehalose, pH 7.4.

### Data



> 95 % as determined by reducing SDS-PAGE.

### Background

Semaphorin 3C is one of six Class 3 secreted semaphorins, which are potent chemorepellents, that play a role in axon and/or vascular guidance during development can be up-regulated in the process of tumor progression. Semaphorin 3C consists of a 20 amino acids signal sequence, a N-terminal Sema domain, a cysteine knot, a furine-type cleavage site, an Ig-like domain, and a C-terminal basic domain. Semaphorin 3C expressed highly in the heart, colon, skeletal muscle, small intestine, testis, ovary and prostate, expressed lowly in the other organs, including the brain.

### For Research Use Only

Toll-free: 1-888-852-8623  
Web: [www.elabscience.com](http://www.elabscience.com)

Tel: 1-832-243-6086  
Email: [techsupport@elabscience.com](mailto:techsupport@elabscience.com)

Fax: 1-832-243-6017