

S1PR2 Polyclonal Antibody

catalog number: **E-AB-91994**

Note: Centrifuge before opening to ensure complete recovery of vial contents.

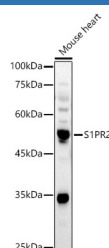
Description

Reactivity	Mouse;Rat
Immunogen	A synthetic peptide of human S1PR2
Host	Rabbit
Isotype	IgG
Purification	Affinity purification
Buffer	Phosphate buffered solution, pH 7.4, containing 0.05% stabilizer and 50% glycerol.

Applications Recommended Dilution

WB	1:500-1:2000
-----------	--------------

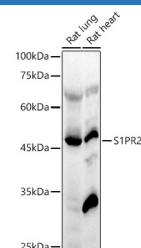
Data



Western blot analysis of Mouse heart using S1PR2 Polyclonal Antibody at 1:1000 dilution.

Observed-MW:40-50 kDa

Calculated-MW:39 kDa



Western blot analysis of various lysates using S1PR2 Polyclonal Antibody at 1:1000 dilution.

Observed-MW:40-50 kDa

Calculated-MW:39 kDa

Preparation & Storage

Storage	Store at -20°C Valid for 12 months. Avoid freeze / thaw cycles.
Shipping	The product is shipped with ice pack, upon receipt, store it immediately at the temperature recommended.

Background

This gene encodes a member of the G protein-coupled receptors, as well as the EDG family of proteins. The encoded protein is a receptor for sphingosine 1-phosphate, which participates in cell proliferation, survival, and transcriptional activation. Defects in this gene have been associated with congenital profound deafness.

For Research Use Only