

Flag-Tag Polyclonal Antibody

catalog number: **E-AB-40525**

Note: Centrifuge before opening to ensure complete recovery of vial contents.

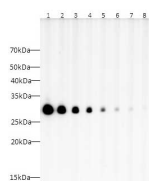
Description

Reactivity	All
Immunogen	Synthetic peptide corresponding to Flag tag conjugated to keyhole limpet haemocyanin.
Host	Rabbit
Isotype	IgG
Purification	Antigen Affinity Purification
Buffer	PBS with 0.05% Proclin300, 1% protective protein and 50% glycerol, pH7.4

Applications

Applications	Recommended Dilution
WB	1:10000-1:20000
IP	3ug/sample
IF	1:2000-4000

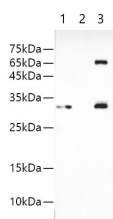
Data



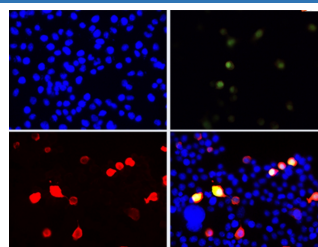
Western blot analysis of 293F cells transfected with Flag tagged recombinant protein at different dilutions. lane 1: 1: 5000, lane 2: 1: 10000, lane 3: 1: 20000, lane 4: 1: 40000, lane 5: 1: 80000, lane 6: 1: 160000, lane 7: 1: 320000, lane 8: 1: 640000

Observed-MW:28 kDa

Calculated-MW:28 kDa



IP Result of 293F cells transfected with FLAG-Tag fusion protein, using anti-FLAG-Tag rabbit antibody. Lane 1:input, lane 2: rabbit IgG Isotype Control, Lane 3: anti-FLAG-Tag rabbit antibody



Immunofluorescent analysis of 293F cells transfected with the FLAG-GFP, using anti-Flag-Tag Polyclonal Antibody at dilution of 1:12000.

Preparation & Storage

Storage Store at -20°C Valid for 12 months. Avoid freeze / thaw cycles.

For Research Use Only

Toll-free: 1-888-852-8623
Web: www.elabscience.com

Tel: 1-832-243-6086
Email: techsupport@elabscience.com

Fax: 1-832-243-6017

Rev. V2.6

Shipping

The product is shipped with ice pack, upon receipt, store it immediately at the temperature recommended.

Background

FLAG-tag is a polypeptide protein tag that can be added to a protein using recombinant DNA technology, having the sequence motif DYKDDDDK. It has been used for studying proteins in living cells and for protein purification by affinity chromatography.

For Research Use Only

Toll-free: 1-888-852-8623

Web: www.elabscience.com

Tel: 1-832-243-6086

Email: techsupport@elabscience.com

Fax: 1-832-243-6017

Rev. V2.6