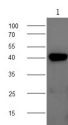


## CHI3L1 Polyclonal Antibody

**catalog number: D-AB-10422L**

**Note:** Centrifuge before opening to ensure complete recovery of vial contents.

Description	
Reactivity	Mouse
Immunogen	Recombinant Mouse CHI3L1 protein expressed by E.coli
Host	Rabbit
Isotype	IgG
Purification	Antigen Affinity Purification
Buffer	PBS with 0.05% proclin 300, 1% protective protein and 50% glycerol,pH7.4
Applications	Recommended Dilution
WB	1:500-1:1000
Data	



Western blot with CHI3L1 Polyclonal antibody at dilution of 1:1000.lane 1:Mouse spleen,lane 2:Mouse lung

**Observed-MW:43 kDa**

**Calculated-MW:44 kDa**

Preparation & Storage	
<b>Storage</b>	Store at -20°C Valid for 12 months. Avoid freeze / thaw cycles.
<b>Shipping</b>	The product is shipped with ice pack,upon receipt,store it immediately at the temperature recommended.

**Background**

Chitinase-3-like protein 1 (CHI3L1) also known as YKL-40, is a secreted glycoprotein that is approximately 40kDa in size that in humans is encoded by the CHI3L1 gene. Elevated levels of CHI3L1 are associated with disorders exhibiting increased connective tissue turnover, such as rheumatoid arthritis, osteoarthritis, scleroderma, and cirrhosis of liver, but is produced in cartilage from old donors or patients with osteoarthritis. CHI3L1 is abnormally expressed in the hippocampus of subjects with schizophrenia and may be involved in the cellular response to various environmental events that are reported to increase the risk of schizophrenia.

### For Research Use Only