

Recombinant Human ALDH1A1 Protein(Trx Tag)

Catalog Number: PDEH100638



Note: Centrifuge before opening to ensure complete recovery of vial contents.

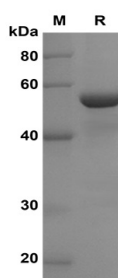
Description

| | |
|---------------------|--|
| Species | Human |
| Source | E.coli-derived Human ALDH1A1 protein Thr153-Ser501, with an N-terminal Trx |
| Mol_Mass | 58.2 kDa |
| Accession | P00352 |
| Bio-activity | Not validated for activity |

Properties

| | |
|-----------------------|--|
| Purity | > 90% as determined by reducing SDS-PAGE. |
| Endotoxin | < 10 EU/mg of the protein as determined by the LAL method |
| Storage | Generally, lyophilized proteins are stable for up to 12 months when stored at -20 to -80 °C. Reconstituted protein solution can be stored at 4-8°C for 2-7 days. Aliquots of reconstituted samples are stable at < -20°C for 3 months. |
| Shipping | This product is provided as lyophilized powder which is shipped with ice packs. |
| Formulation | Lyophilized from a 0.2 µm filtered solution in PBS with 5% Trehalose and 5% Mannitol. |
| Reconstitution | It is recommended that sterile water be added to the vial to prepare a stock solution of 0.5 mg/mL. Concentration is measured by UV-Vis. |

Data



SDS-PAGE analysis of Human ALDH1A1 proteins, 2µg/lane of Recombinant Human ALDH1A1 proteins was resolved with SDS-PAGE under reducing conditions, showing bands at 58 KD

Background

For Research Use Only

A Reliable Research Partner in Life Science and Medicine
Tel:400-999-2100

Email:techsupport@elabscience.cn

Web:www.elabscience.cn

Rev. V1.6

Recombinant Human ALDH1A1 Protein(Trx Tag)

Catalog Number: PDEH100638



Aldehyde dehydrogenase 1 family, member A1 (ALDH1A1), also known as Aldehyde dehydrogenase 1 (ALDH1), or Retinaldehyde Dehydrogenase 1 (RALDH1), is an enzyme that is expressed at high levels in stem cells and that has been suggested to regulate stem cell function. The retinaldehyde dehydrogenase (RALDH) subfamily of ALDHs, composed of ALDH1A1, ALDH1A2, ALDH1A3, and ALDH8A1, regulate development by catalyzing retinoic acid biosynthesis. The ALDH1A1 protein belongs to the aldehyde dehydrogenases family of proteins. Aldehyde dehydrogenase is the second enzyme of the major oxidative pathway of alcohol metabolism. ALDH1A1 also belongs to the group of corneal crystallins that help maintain the transparency of the cornea. Increased ALDH1A1 activity has been found in the stem cell populations of leukemia and some solid tumors. In tumor specimens, increased ALDH1A1 immunopositivity was found not only in secretory type cancer epithelial cells but also in neuroendocrine tumor populations. ALDH1 has been identified as a reliable marker of breast cancer stem cells. ALDH1 expression in primary cancer is an independent prognostic factor in node-positive breast cancer patients. ALDH1A1 plays a key role in normal hematopoiesis, and as a TLX1 transcriptional target, ALDH1A1 may contribute to the ability of this homeoprotein to alter cell fate and induce tumor growth.

For Research Use Only

A Reliable Research Partner in Life Science and Medicine
Tel:400-999-2100

Email:techsupport@elabscience.cn

Web:www.elabscience.cn

Rev. V1.6