

CK-7 Polyclonal Antibody

catalog number: D-AB-10469L

Note: Centrifuge before opening to ensure complete recovery of vial contents.

Description

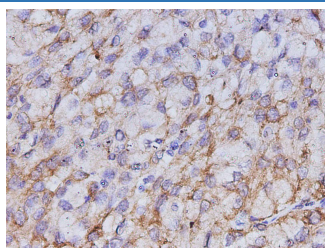
Reactivity	Human
Immunogen	Recombinant Human CK-7 protein expressed by E.coli
Host	Rabbit
Isotype	IgG
Purification	Antigen Affinity Purification
Conjugation	Unconjugated
Buffer	PBS with 0.05% Proclin300, 1% protective protein and 50% glycerol, pH7.4

Applications

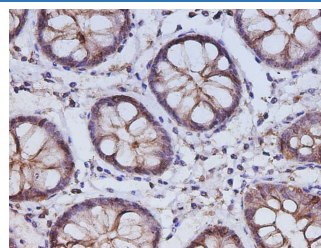
Recommended Dilution

IHC	1:500-1:1000
IF	1:50-1:200

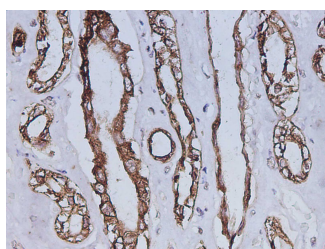
Data



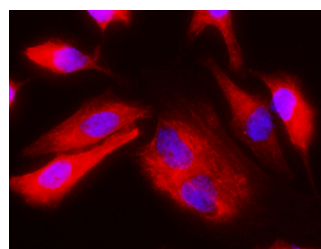
Immunohistochemistry of paraffinembedded Human lung adenocarcinoma using CK-7 Polyclonal antibody at dilution of 1:1000.



Immunohistochemistry of paraffinembedded Human colon using CK-7 Polyclonal antibody at dilution of 1:500.



Immunohistochemistry of paraffinembedded Human kidney using CK-7 Polyclonal antibody at dilution of 1:500.



Immunofluorescence analysis of Hela cells using CK-7 Polyclonal Antibody at dilution of 1:200

Preparation & Storage

Storage	Store at -20°C Valid for 12 months. Avoid freeze / thaw cycles.
Shipping	The product is shipped with ice pack, upon receipt, store it immediately at the temperature recommended.

Background

Keratins are a large family of proteins that form the intermediate filament cytoskeleton of epithelial cells, which are classified into two major sequence types. Type I keratins are a group of acidic intermediate filament proteins, including K9–K23, and the hair keratins Ha1–Ha8. Type II keratins are the basic or neutral counterparts to the acidic type I keratins, including K1–K8, and the hair keratins, Hb1–Hb6. KRT7, also named as cytokeratin 7, is one member of type II basic cytokeratin. It is specifically expressed in the simple epithelia lining the cavities of the internal organs and in the gland ducts and blood vessels, and their neoplasms. KRT7 is marker of epithelial tissues, but not present in carcinomas of stratified squamous cell origin. This antibody is specifically against KRT7.