

ABCB5 Monoclonal Antibody

catalog number: E-AB-22032

Note: Centrifuge before opening to ensure complete recovery of vial contents.

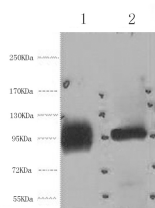
Description

Reactivity	Human
Immunogen	Synthetic Peptide
Host	Mouse
Isotype	IgG
Clone	7L3
Purification	Protein A purification
Buffer	Phosphate buffered solution, pH 7.4, containing 0.05% stabilizer, 0.5% protein protectant and 50% glycerol.

Applications

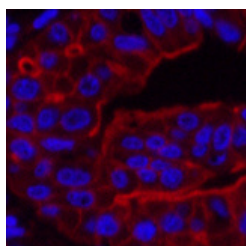
Applications	Recommended Dilution
WB	1:500-1:3000
IHC	1:50-1:300
IF	1:100-1:300

Data

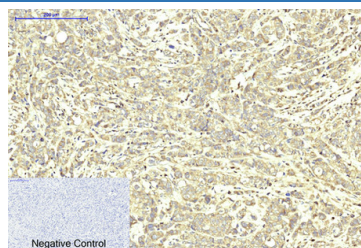


Western Blot analysis of 1) Hela, 2) 293T cells using ABCB5 Monoclonal Antibody at dilution of 1:2000.

Observed-MW:90 kDa
Calculated-MW:90 kDa



Immunofluorescence analysis of Human liver cancer tissue using ABCB5 Monoclonal Antibody at dilution of 1:200.



Immunohistochemistry of paraffin-embedded Human breast cancer tissue using ABCB5 Monoclonal Antibody at dilution of 1:200.

Preparation & Storage

Storage	Store at -20°C Valid for 12 months. Avoid freeze / thaw cycles.
Shipping	The product is shipped with ice pack, upon receipt, store it immediately at the temperature recommended.

Background

For Research Use Only

ABCB5 belongs to the ATP-binding cassette (ABC) transporter superfamily of integral membrane proteins. These proteins participate in ATP-dependent transmembrane transport of structurally diverse molecules ranging from small ions, sugars, and peptides to more complex organic molecules.

For Research Use Only

Toll-free: 1-888-852-8623
Web: www.elabscience.com

Tel: 1-832-243-6086
Email: techsupport@elabscience.com

Fax: 1-832-243-6017

Rev. V1.7