

GM-CSF/CSF2 (C-6His), Mouse, Recombinant**Cat. No. : PCK039****产品信息**

别名	Granulocyte-Macrophage Colony-Stimulating Factor; GM-CSF; Colony-Stimulating Factor; CSF; Molgramostin; Sargramostin; CSF2; GMCSF
物种	Mouse
表达宿主	Human Cells
序列信息	Ala18-Lys141
检索号	P01587
标签	C-6His
分子量	15.1 kDa
有效期	12 months
生物活性	Measured in a cell proliferation assay using FDC-P1 cells. The ED50 for this effect is 40-170 pg/mL.

产品特性

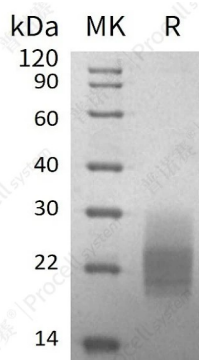
内毒素	< 1.0 EU per 1 µg as determined by LAL test.
保存	Lyophilized protein should be stored at -5~-20°C, stable for one year after receipt. Reconstituted protein solution can be stored at 2-8°C for 2-7 days. Aliquots of reconstituted samples are stable at -5~-20°C for 3 months.
运输	Ambient temperature or ice pack.
制剂	Lyophilized from a 0.2 µm filtered solution of PBS, pH 7.4.
复溶	Always centrifuge tubes before opening. Do not mix by vortex or pipetting. It is not recommended to reconstitute to a concentration less than 100 µg/mL. Dissolve the lyophilized protein in sterile water. Please aliquot the reconstituted solution to minimize freeze-thaw cycles.

背景介绍

Granulocyte-Macrophage Colony Stimulating Factor (GM-CSF) was initially characterized as a Growth Factor that can support the in vitro colony formation of granulocyte-macrophage progenitors. It is produced by a number of different cell types (including activated T cells, B cells, macrophages, mast cells, endothelial cells and fibroblasts) in response to Cytokine of immune and inflammatory stimuli. Besides granulocyte-macrophage progenitors, GM-CSF is also a Growth Factor for erythroid, megakaryocyte and eosinophil progenitors. On mature hematopoietic, monocytes/macrophages and eosinophils. GM-CSF has a functional role on nonhematopoietic cells. It can induce human endothelial cells to migrate and proliferate. Additionally, GM-CSF can also stimulate the proliferation of a number of tumor cell lines, including osteogenic sarcoma, carcinoma and adenocarcinoma cell lines.



SDS-PAGE



Bio activity

