

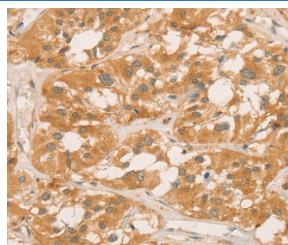
## CPB1 Polyclonal Antibody

catalog number: E-AB-11098

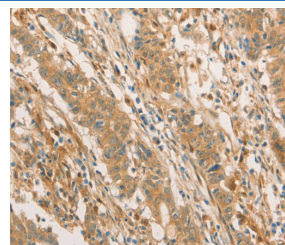
**Note:** Centrifuge before opening to ensure complete recovery of vial contents.

Description	
Reactivity	Human;Rat
Immunogen	Recombinant protein of human CPB1
Host	Rabbit
Isotype	IgG
Purification	Affinity purification
Conjugation	Unconjugated
Buffer	Phosphate buffered solution, pH 7.4, containing 0.05% stabilizer and 50% glycerol.
Applications	Recommended Dilution
IHC	1:100-1:300

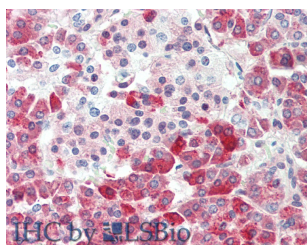
## Data



Immunohistochemistry of paraffin-embedded Human thyroid cancer tissue using CPB1 Polyclonal Antibody at dilution of 1:60



Immunohistochemistry of paraffin-embedded Human gastric cancer using CPB1 Polyclonal Antibody at dilution of 1:60



Immunohistochemistry of paraffin-embedded Human gastric cancer using CPB1 Polyclonal Antibody at dilution of 1:60(Elabscience Product Detected by Lifespan).

Preparation & Storage	
Storage	Store at -20°C Valid for 12 months. Avoid freeze / thaw cycles.
Shipping	The product is shipped with ice pack,upon receipt,store it immediately at the temperature recommended.

## Background

Three different procarboxypeptidases A and two different procarboxypeptidases B have been isolated. The B1 and B2 forms differ from each other mainly in isoelectric point. Carboxypeptidase B1 is a highly tissue-specific protein and is a useful serum marker for acute pancreatitis and dysfunction of pancreatic transplants. It is not elevated in pancreatic carcinoma.

## For Research Use Only