

Recombinant Phospho-IRF3 (Ser396) Monoclonal Antibody

catalog number: AN301389L

Note: Centrifuge before opening to ensure complete recovery of vial contents.

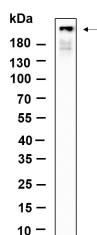
Description

Reactivity	Human;Mouse
Immunogen	A synthetic peptide corresponding to residues around (Ser396) of Human Phospho-IRF3
Host	Rabbit
Isotype	IgG,k
Clone	10A12
Purification	Protein A
Buffer	PBS, 50% glycerol, 0.05% Proclin 300, 0.05% protein protectant.

Applications Recommended Dilution

WB	1:500-1:2000
-----------	--------------

Data



Western Blot with Recombinant Phospho-IRF3 (Ser396)
Monoclonal Antibody at dilution of 1:1000 dilution. Lane A:
Hela lysate.

Observed-MW:60 kDa

Calculated-MW:47 kDa

Preparation & Storage

Storage	Store at -20°C Valid for 12 months. Avoid freeze / thaw cycles.
Shipping	Ice bag

Background

This gene encodes a member of the interferon regulatory transcription factor (IRF) family. The encoded protein is found in an inactive cytoplasmic form that upon serine/threonine phosphorylation forms a complex with CREBBP. This complex translocates to the nucleus and activates the transcription of interferons alpha and beta, as well as other interferon-induced genes. Alternatively spliced transcript variants encoding multiple isoforms have been observed for this gene.

For Research Use Only

Toll-free: 1-888-852-8623
Web: www.elabscience.com

Tel: 1-832-243-6086
Email: techsupport@elabscience.com

Fax: 1-832-243-6017

Rev. V1.0