

Recombinant Human SEPHS1 Protein (His Tag)

Catalog Number: PKSH033016

Note: Centrifuge before opening to ensure complete recovery of vial contents.

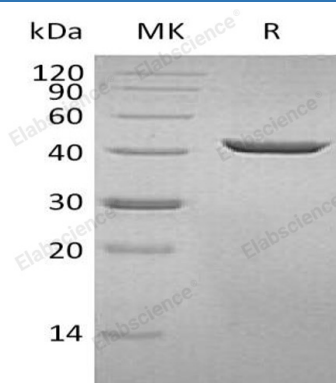
Description

Species	Human
Source	HEK293 Cells-derived Human SEPHS1 protein Met 1-Ser392, with an C-terminal His
Calculated MW	43.9 kDa
Observed MW	42 kDa
Accession	P49903
Bio-activity	Not validated for activity

Properties

Purity	> 95 % as determined by reducing SDS-PAGE.
Concentration	Subject to label value.
Endotoxin	< 1.0 EU per µg of the protein as determined by the LAL method.
Storage	Store at < -20°C, stable for 6 months. Please minimize freeze-thaw cycles.
Shipping	This product is provided as liquid. It is shipped at frozen temperature with blue ice/gel packs. Upon receipt, store it immediately at < -20°C.
Formulation	Supplied as a 0.2 µm filtered solution of 25mM Tris-HCl, 100mM glycine, 10% Glycerol, pH 7.3.

Data



> 95 % as determined by reducing SDS-PAGE.

Background

Selenophosphate synthetase 1 (SEPHS1) belongs to the selenophosphate synthase 1 family, Class II subfamily. It has four different isoforms by alternative splicing. Isoform 1 and isoform 2 are gradually expressed during the cell cycle until G2/M phase and then decreased, which Isoform 3 is gradually expressed during the cell cycle until S phase and then decreased. SEPHS1 can be activated by phosphate ions and by potassium ions. It can synthesize selenophosphate from selenide and ATP. Selenophosphate is the selenium donor used to synthesize selenocysteine, which is co-translationally incorporated into selenoproteins at in-frame UGA codons.