

## ATP5C1 Polyclonal Antibody

catalog number: E-AB-52459

**Note:** Centrifuge before opening to ensure complete recovery of vial contents.

### Description

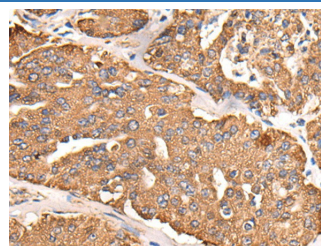
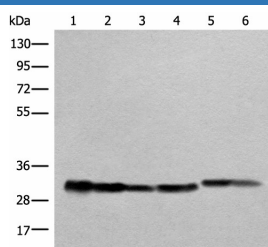
<b>Reactivity</b>	Human;Mouse;Rat
<b>Immunogen</b>	Fusion protein of human ATP5C1
<b>Host</b>	Rabbit
<b>Isotype</b>	IgG
<b>Purification</b>	Antigen affinity purification
<b>Conjugation</b>	Unconjugated
<b>Buffer</b>	Phosphate buffered solution, pH 7.4, containing 0.05% stabilizer and 50% glycerol.

### Applications

### Recommended Dilution

<b>WB</b>	1:1000-1:5000
<b>IHC</b>	1:40-1:200

### Data



Western blot analysis of Human heart tissue A549 231 Jurkat HEPG2 and Hela cell lysates using ATP5C1 Polyclonal Antibody at dilution of 1:1000

Immunohistochemistry of paraffin-embedded Human liver cancer tissue using ATP5C1 Polyclonal Antibody at dilution of 1:55(×200)

**Observed-MW:Refer to figures**

**Calculated-MW:33 kDa**

### Preparation & Storage

<b>Storage</b>	Store at -20°C Valid for 12 months. Avoid freeze / thaw cycles.
<b>Shipping</b>	The product is shipped with ice pack,upon receipt,store it immediately at the temperature recommended.

### Background

ATP5C1(ATP synthase subunit gamma,mitochondrial) is also named as ATP5C,ATP5CL1 and belongs to the ATPase gamma chain family. Some scientists reported the complete sequence of the gene for the human ATP synthase gamma subunit and described tissue-specific isoforms of the subunit generated by alternative splicing of exon 9. The liver (L) isoform differed from the heart (H) isoform by the addition of a single amino acid (asp273) at the C terminus. .