

AF/LE Purified Anti-Human CD1a Antibody[OKT-6]

catalog number: E-AB-F11260

Note: Centrifuge before opening to ensure complete recovery of vial contents.

Description

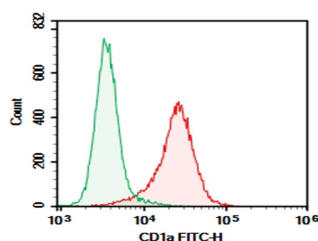
| | |
|--------------------|--|
| Reactivity | Human |
| Host | Mouse |
| Isotype | Mouse IgG1, κ |
| Clone | OKT-6 |
| Conjugation | None (AF/LE) |
| buffer | Sterile PBS, pH 7.2. < 1.0 EU per mg of the antibody as determined by the LAL method |

Applications

Recommended Dilution

| | |
|------------|--|
| FCM | 2 $\mu\text{g}/\text{mL}$ (1×10^5 - 5×10^5 cells) |
|------------|--|

Data



Molt-4 were stained with 0.2 μg AF/LE Purified Anti-Human CD1a Antibody[OKT-6] (Right) and 0.2 μg Mouse IgG1, κ Isotype Control (Left), followed by FITC-conjugated Goat Anti-Mouse IgG Secondary Antibody.

Preparation & Storage

| | |
|-----------------|--|
| Storage | Store at 4°C valid for 12 months or -20°C valid for long term storage, avoid freeze / thaw cycles. This preparation contains no preservatives, thus it should be handled under aseptic conditions. |
| Shipping | Ice bag |

Background

CD1a is a 49 kD member of the immunoglobulin superfamily also known as T6 and R4. It is a type I membrane glycoprotein with structural similarities to MHC class I and is non-covalently associated with β 2-microglobulin. CD1a plays a role in non-peptide glycolipid antigen presentation to CD1-restricted T cells. It is expressed on cortical double positive and single positive thymocytes, Langerhans cells, and dendritic cells. In addition to antigen presentation, CD1a has been implicated in thymic T cell development.

For Research Use Only