

Recombinant Human Cryptic/CFC1 Protein (His Tag)

Catalog Number: PKSH032287

Note: Centrifuge before opening to ensure complete recovery of vial contents.

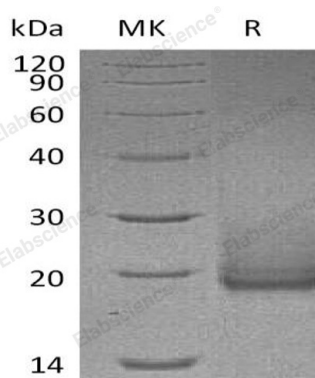
Description

Species	Human
Source	HEK293 Cells-derived Human Cryptic/CFC1 protein Tyr26-Gly169, with an C-terminal His
Calculated MW	16.9 kDa
Observed MW	17-30 kDa
Accession	P0CG37
Bio-activity	Not validated for activity

Properties

Purity	> 95 % as determined by reducing SDS-PAGE.
Endotoxin	< 1.0 EU per µg of the protein as determined by the LAL method.
Storage	Generally, lyophilized proteins are stable for up to 12 months when stored at -20 to -80 °C. Reconstituted protein solution can be stored at 4-8°C for 2-7 days. Aliquots of reconstituted samples are stable at < -20°C for 3 months.
Shipping	This product is provided as lyophilized powder which is shipped with ice packs.
Formulation	Lyophilized from a 0.2 µm filtered solution of PBS, pH 7.4. Normally 5% - 8% trehalose, mannitol and 0.01% Tween 80 are added as protectants before lyophilization. Please refer to the specific buffer information in the printed manual.
Reconstitution	Please refer to the printed manual for detailed information.

Data



> 95 % as determined by reducing SDS-PAGE.

Background

Cryptic (CFC1) is a member of the epidermal growth factor (EGF)- Cripto, Frl-1, and Cryptic (CFC) family. It contains an EGF-like domain, and is glycosylated on its N-terminal during post-translational modification. Cryptic is identified as a NODAL coreceptor involved in the correct establishment of the left-right axis. It may play a role in mesoderm and/or neural patterning during gastrulation. The abnormal expression of this gene may cause a series of diseases such as HTX2, Transposition of the great arteries dextro-looped 2, and Conotruncal heart malformations.

For Research Use Only

Toll-free: 1-888-852-8623
Web: www.elabscience.com

Tel: 1-832-243-6086
Email: techsupport@elabscience.com

Fax: 1-832-243-6017