

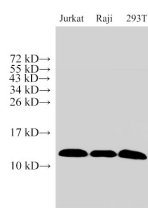
## MIF Polyclonal Antibody

catalog number: E-AB-40456

**Note:** Centrifuge before opening to ensure complete recovery of vial contents.

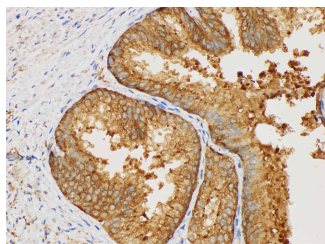
Description	
Reactivity	Human;Mouse;Rat
Immunogen	Recombinant Human Macrophage migration inhibitory factor protein
Host	Rabbit
Isotype	IgG
Purification	Antigen Affinity Purification
Conjugation	Unconjugated
Buffer	PBS with 0.05% Proclin300, 1% protective protein and 50% glycerol, pH7.4
Applications	Recommended Dilution
WB	1:500-1:2000
IHC	1:50-1:200

## Data

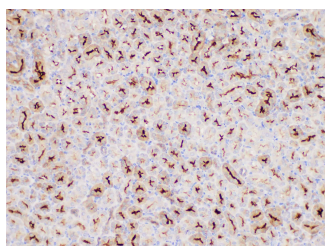


Western Blot analysis of Jurkat, Raji and 293T cells using MIF Polyclonal Antibody at dilution of 1:1000.

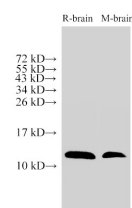
**Observed-MW:12 kDa**  
**Calculated-MW:12 kDa**



Immunohistochemistry of paraffin-embedded Human prostate using MIF Polyclonal Antibody at dilution of 1:50.

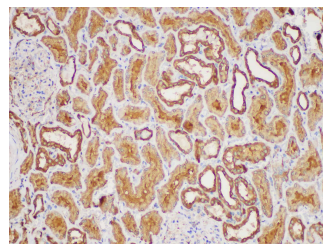


Immunohistochemistry of paraffin-embedded Mouse kidney using MIF Polyclonal Antibody at dilution of 1:50.

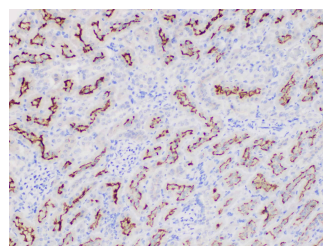


Western Blot analysis of Rat brain and Mouse brain using MIF Polyclonal Antibody at dilution of 1:500.

**Observed-MW:12 kDa**  
**Calculated-MW:12 kDa**



Immunohistochemistry of paraffin-embedded Human kidney using MIF Polyclonal Antibody at dilution of 1:50.



Immunohistochemistry of paraffin-embedded Rat kidney using MIF Polyclonal Antibody at dilution of 1:50.

## Preparation & Storage

### For Research Use Only

**Storage**

Store at -20°C Valid for 12 months. Avoid freeze / thaw cycles.

**Shipping**

The product is shipped with ice pack, upon receipt, store it immediately at the temperature recommended.

**Background**

This gene encodes a lymphokine involved in cell-mediated immunity, immunoregulation, and inflammation. It plays a role in the regulation of macrophage function in host defense through the suppression of anti-inflammatory effects of glucocorticoids. This lymphokine and the JAB1 protein form a complex in the cytosol near the peripheral plasma membrane, which may indicate an additional role in integrin signaling pathways.