

KIF22 Polyclonal Antibody

catalog number: E-AB-16546

Note: Centrifuge before opening to ensure complete recovery of vial contents.

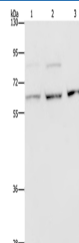
Description

Reactivity	Human
Immunogen	Synthetic peptide of human KIF22
Host	Rabbit
Isotype	IgG
Purification	Affinity purification
Buffer	Phosphate buffered solution, pH 7.4, containing 0.05% stabilizer and 50% glycerol.

Applications

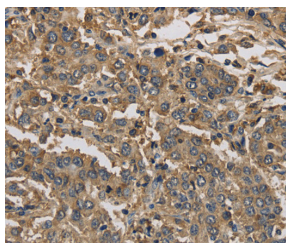
Applications	Recommended Dilution
WB	1:200-1:1000
IHC	1:50-1:200

Data

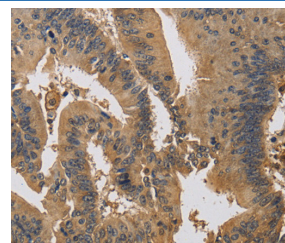


Western Blot analysis of A431, MCF-7 and Hela cell using KIF22 Polyclonal Antibody at dilution of 1:200

Calculated-MW:73 kDa



Immunohistochemistry of paraffin-embedded Human liver cancer using KIF22 Polyclonal Antibody at dilution of 1:30



Immunohistochemistry of paraffin-embedded Human colon cancer using KIF22 Polyclonal Antibody at dilution of 1:30

Preparation & Storage

Storage	Store at -20°C Valid for 12 months. Avoid freeze / thaw cycles.
Shipping	The product is shipped with ice pack, upon receipt, store it immediately at the temperature recommended.

Background

The protein encoded by this gene is a member of the kinesin-like protein family. The family members are microtubule-dependent molecular motors that transport organelles within cells and move chromosomes during cell division. The C-terminal half of this protein has been shown to bind DNA. Studies with the *Xenopus* homolog suggests its essential role in metaphase chromosome alignment and maintenance. Alternatively spliced transcript variants encoding different isoforms have been found for this gene.

For Research Use Only