

# HRP-conjugated beta Tubulin Monoclonal Antibody

catalog number: AN00293HP



**Note:** Centrifuge before opening to ensure complete recovery of vial contents.

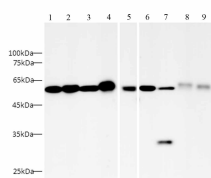
## Description

<b>Reactivity</b>	Human;Mouse;Rat;Zebrafish
<b>Immunogen</b>	Recombinant human TUBB protein by E. Coli
<b>Host</b>	Mouse
<b>Isotype</b>	IgG
<b>Clone</b>	2E8-2
<b>Purification</b>	Protein A/G Purification
<b>Conjugation</b>	HRP
<b>buffer</b>	PBS with 0.05% proclin 300, 1% protective protein and 50% glycerol,pH7.4

## Applications

<b>WB</b>	1:2500-1:5000
-----------	---------------

## Data



Western blot with HRP-conjugated beta Tubulin Monoclonal

Antibody at dilution of 1:5000. lane 1:Raji whole cell lysate, lane 2: Jurkat whole cell lysate, lane 3: HL-60 whole cell lysate, lane 4: U87-MG whole cell lysate, lane 5: mouse lung whole cell lysate, lane 6: Raw264.7 whole cell lysate, lane 7: C6 whole cell lysate, lane 8: zebrafish whole cell lysate, lane 9: zebrafish whole cell lysate

**Observed-MV:55 kDa**

**Calculated-MV:55 kDa**

## Preparation & Storage

<b>Storage</b>	Store at -20°C Valid for 12 months. Avoid freeze / thaw cycles. Protected from prolonged exposure to light.
<b>Shipping</b>	The product is shipped with ice pack, upon receipt, store it immediately at the temperature recommended.

## Background

In eukaryotes there are six members of the tubulin superfamily.  $\alpha$ - and  $\beta$ -tubulins polymerize into microtubules, a major component of the eukaryotic cytoskeleton. Microtubules function in many essential cellular processes, including mitosis. Both  $\alpha$  and  $\beta$  tubulins have a mass of around 50 kDa. Tubulin was long thought to be specific to eukaryotes. Beta-tubulin gene is commonly used as a loading control for western blot.

## For Research Use Only

A Reliable Research Partner in Life Science and Medicine  
Tel: 400-999-2100

Email: [techsupport@elabscience.cn](mailto:techsupport@elabscience.cn)

Web: [www.elabscience.cn](http://www.elabscience.cn)

Rev. V1.4