

## Recombinant CD45/PTPRC Monoclonal Antibody

**catalog number: AN300293P**

**Note:** Centrifuge before opening to ensure complete recovery of vial contents.

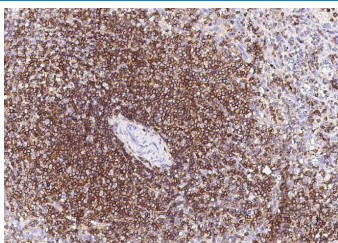
### Description

<b>Reactivity</b>	Human
<b>Immunogen</b>	A synthetic peptide corresponding to the C-terminus of the Human CD45/PTPRC
<b>Host</b>	Rabbit
<b>Isotype</b>	IgG
<b>Clone</b>	3P8
<b>Purification</b>	Protein A
<b>Buffer</b>	0.2 µm filtered solution in PBS

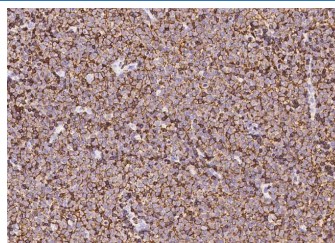
### Applications Recommended Dilution

<b>IHC-P</b>	1:100-1:500
--------------	-------------

### Data



Immunohistochemistry of paraffin-embedded human spleen using CD45/PTPRC Monoclonal Antibody at dilution of 1:200.



Immunohistochemistry of paraffin-embedded human lymphoma using CD45/PTPRC Monoclonal Antibody at dilution of 1:200.

### Preparation & Storage

<b>Storage</b>	This antibody can be stored at 2°C-8°C for one month without detectable loss of activity. Antibody products are stable for twelve months from date of receipt when stored at -20°C to -80°C. Preservative-Free. Avoid repeated freeze-thaw cycles.
<b>Shipping</b>	Ice bag

### Background

CD45, previously called LCA (leukocyte common antigen), T200, or Ly5 in mice, is member C of the class 1 (receptor-like) protein tyrosine phosphatase family (PTPRC). It is a variably glycosylated 180-220 kDa transmembrane protein that is abundantly expressed on all nucleated cells of hematopoietic origin. Multiple splicing isoforms of exon 4 (A), 5 (B), and 6 (C) are expressed according to cell type, developmental stage and antigenic exposure. The longest form, CD45RABC (called B220 in mouse) is expressed on B lymphocytes, The shortest form, CD45R0, lacking exons 4, 5 and 6 which encode aa 34-194, is expressed on memory cells, while intermediate sizes are expressed on other T cells.

### For Research Use Only

Toll-free: 1-888-852-8623  
Web: [www.elabscience.com](http://www.elabscience.com)

Tel: 1-832-243-6086  
Email: [techsupport@elabscience.com](mailto:techsupport@elabscience.com)

Fax: 1-832-243-6017

Rev. V1.0