

Elab Fluor® 700 Anti-Human CD163 Antibody[GHI/61]

Catalog Number: E-AB-F1298M1

Note: Centrifuge before opening to ensure complete recovery of vial contents.

Description

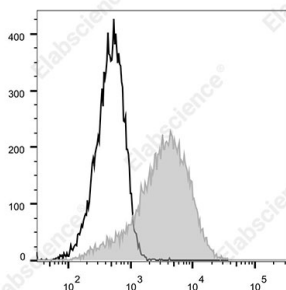
Reactivity	Human
Host	Mouse
Isotype	Mouse IgG1, κ
Clone No.	GHI/61
Isotype Control	Elab Fluor® 700 Mouse IgG1, κ Isotype Control[MOPC-21] [Product E-AB-F09792M1]
Conjugation	Elab Fluor® 700
Conjugation Information	Elab Fluor® 700 is designed to be excited by the Red laser (627-640 nm) and detected using an optical filter centered near 719 nm (e.g., a 725/40 nm bandpass filter).
Storage Buffer	Phosphate buffered solution, pH 7.2, containing 0.09% stabilizer and 1% protein protectant.

Applications

Recommended usage

FCM	Each lot of this antibody is quality control tested by flow cytometric analysis. The amount of the reagent is suggested to be used 5 μL of antibody per test (million cells in 100 μL staining volume or per 100 μL of whole blood). Please check your vial before the experiment. Since applications vary, the appropriate dilutions must be determined for individual use.
------------	---

Data



Staining of normal human peripheral blood cells with Elab Fluor® 700 Anti-Human CD163 Antibody[GHI/61](filled gray histogram) or Elab Fluor® 700 Mouse IgG1, κ Isotype Control(empty black histogram). Cells in the monocytes gate were used for analysis.

Preparation & Storage

Storage	Keep as concentrated solution. This product can be stored at 2-8°C for 12 months. Please protected from prolonged exposure to light and do not freeze.
Shipping	Ice bag

Antigen Information

Alternate Names	ED2(rat)Hemoglobin/Haptoglobin Complex ReceptorM130RM3/1 macrophage-associated antigenp155;GHI/61
------------------------	---

For Research Use Only

Toll-free: 1-888-852-8623
Web: www.elabscience.com

Tel: 1-832-243-6086
Email: techsupport@elabscience.com

Fax: 1-832-243-6017

Rev. V1.5

Uniprot ID

Q86VB7

Gene ID

9332

Background

CD163 is a member of the group B scavenger receptor cysteine-rich superfamily, also known as GHI/61, M130, RM3/1, p155, hemoglobin-haptoglobin complex receptor, or macrophage-associated antigen. It is a 134 kD (non-reduced)/155 kD (reduced) glycoprotein primarily expressed on macrophages, Kupffer cells, monocytes, a subset of dendritic cells, and a subset of hematopoietic stem/progenitor cells. CD163 binds to haptoglobin-hemoglobin complex and TWEAK, and plays a role in clearing hemoglobin and regulating cytokine production by macrophages. Membrane CD163 can be cleaved by metalloproteinases (MMP), resulting in a soluble form. Elevated serum level of sCD163 has been implicated in many kinds of inflammatory diseases.