

## SNAP91 Polyclonal Antibody

**catalog number: E-AB-61338**

**Note:** Centrifuge before opening to ensure complete recovery of vial contents.

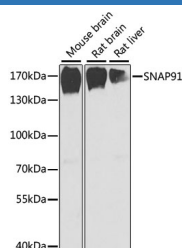
### Description

<b>Reactivity</b>	Mouse;Rat
<b>Immunogen</b>	Recombinant fusion protein of human SNAP91 (NP_001229723.1).
<b>Host</b>	Rabbit
<b>Isotype</b>	IgG
<b>Purification</b>	Affinity purification
<b>Buffer</b>	Phosphate buffered solution, pH 7.4, containing 0.05% stabilizer and 50% glycerol.

### Applications Recommended Dilution

<b>WB</b>	1:500-1:2000
-----------	--------------

### Data



Western blot analysis of extracts of various cell lines using SNAP91 Polyclonal Antibody at dilution of 1:1000.

**Observed-MW:180 kDa**

**Calculated-MW:6 kDa/63 kDa/89 kDa/92 kDa**

### Preparation & Storage

<b>Storage</b>	Store at -20°C Valid for 12 months. Avoid freeze / thaw cycles.
<b>Shipping</b>	The product is shipped with ice pack, upon receipt, store it immediately at the temperature recommended.

### Background

SNAP91 (Synaptosome Associated Protein 91) is a Protein Coding gene. Diseases associated with SNAP91 include Cataract 8, Multiple Types and Myopathy, Centronuclear, 2. Among its related pathways are Clathrin-mediated endocytosis and Vesicle-mediated transport. Gene Ontology (GO) annotations related to this gene include protein kinase binding and clathrin binding. An important paralog of this gene is PICALM.

### For Research Use Only