

Recombinant VWF Monoclonal Antibody

catalog number: **AN300869L**

Note: Centrifuge before opening to ensure complete recovery of vial contents.

Description

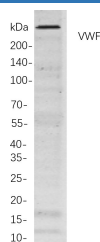
Reactivity	Human;Mouse;Rat
Immunogen	Recombinant Human VWF protein
Host	Rabbit
Isotype	IgG, κ
Clone	9B6
Purification	Protein A
Buffer	PBS, 50% glycerol, 0.05% Proclin 300, 0.05% protein protectant.

Applications

Recommended Dilution

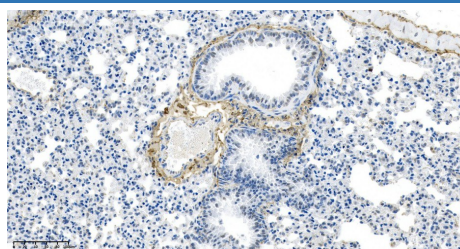
IHC	1:1000-1:4000
WB	1:2000-1:10000

Data



Western Blot with Recombinant VWF Monoclonal Antibody at dilution of 1:1000 dilution. Lane A: HepG2 cells.

Observed-MW:280 kDa
Calculated-MW:309 kDa



Immunohistochemistry of paraffin-embedded mouse lungs using Recombinant VWF Monoclonal Antibody at dilution of 1:200.

Preparation & Storage

Storage	Store at -20°C Valid for 12 months. Avoid freeze / thaw cycles.
Shipping	Ice bag

Background

This gene encodes a glycoprotein involved in hemostasis. The encoded preproprotein is proteolytically processed following assembly into large multimeric complexes. These complexes function in the adhesion of platelets to sites of vascular injury and the transport of various proteins in the blood. Mutations in this gene result in von Willebrand disease, an inherited bleeding disorder. An unprocessed pseudogene has been found on chromosome 22.

For Research Use Only

Toll-free: 1-888-852-8623
Web: www.elabscience.com

Tel: 1-832-243-6086
Email: techsupport@elabscience.com

Fax: 1-832-243-6017

Rev. V1.0