

Recombinant Human EED/Embryonic Ectoderm Development Protein (His & GST Tag)

Catalog Number: PKSH031158

Note: Centrifuge before opening to ensure complete recovery of vial contents.

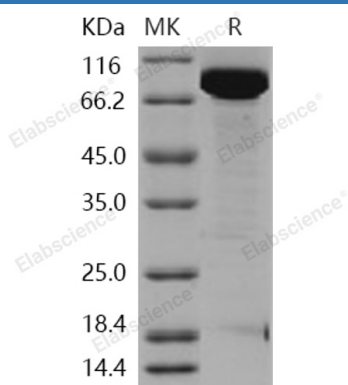
Description

Species	Human
Source	Baculovirus-Insect Cells-derived Human EED/Embryonic Ectoderm Development protein Met 1-Arg 441, with an N-terminal His & GST
Calculated MW	78.0 kDa
Observed MW	75-85 kDa
Accession	O75530-1
Bio-activity	Not validated for activity

Properties

Purity	> 93 % as determined by reducing SDS-PAGE.
Endotoxin	< 1.0 EU per µg of the protein as determined by the LAL method.
Storage	Generally, lyophilized proteins are stable for up to 12 months when stored at -20 to -80 °C. Reconstituted protein solution can be stored at 4-8°C for 2-7 days. Aliquots of reconstituted samples are stable at < -20°C for 3 months.
Shipping	This product is provided as lyophilized powder which is shipped with ice packs.
Formulation	Lyophilized from sterile 20mM Tris, 500mM NaCl, pH 8.0, 2mM GSH, 10% glycerol. Normally 5% - 8% trehalose, mannitol and 0.01% Tween 80 are added as protectants before lyophilization. Please refer to the specific buffer information in the printed manual.
Reconstitution	Please refer to the printed manual for detailed information.

Data



> 93 % as determined by reducing SDS-PAGE.

Background

For Research Use Only

Toll-free: 1-888-852-8623
Web: www.elabscience.com

Tel: 1-832-243-6086
Email: techsupport@elabscience.com

Fax: 1-832-243-6017

Clusterin, also known as complement-associated protein SP-40, Complement cytolysis inhibitor, Apolipoprotein J, Testosterone-repressed prostate message 2, Aging-associated gene 4 protein, CLU and APOJ, is a secreted protein which belongs to the clusterin family. Clusterin/Apolipoprotein J/Apo-J is an enigmatic glycoprotein with a nearly ubiquitous tissue distribution and an apparent involvement in biological processes ranging from mammary gland involution to neurodegeneration in Alzheimer's disease. Its major form, a heterodimer, is secreted and present in physiological fluids, but truncated forms targeted to the nucleus have also been identified. Clusterin/Apolipoprotein J/Apo-J is a widely distributed glycoprotein with a wide range of biologic properties. A prominent and defining feature of clusterin is its marked induction in such disease states as glomerulonephritis, cystic renal disease, renal tubular injury, neurodegenerative conditions, atherosclerosis, and myocardial infarction. Upregulation of clusterin mRNA and protein levels detected in diverse disease states and in in vitro systems have led to suggestions that it functions in membrane lipid recycling, in apoptotic cell death, and as a stress-induced secreted chaperone protein, amongst others.