

## NEFL Polyclonal Antibody

catalog number: E-AB-40641

**Note:** Centrifuge before opening to ensure complete recovery of vial contents.

### Description

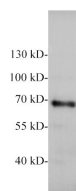
<b>Reactivity</b>	Mouse
<b>Immunogen</b>	Recombinant Human NEFL protein expressed by E.coli.
<b>Host</b>	Rabbit
<b>Isotype</b>	IgG
<b>Purification</b>	Antigen Affinity Purification
<b>Conjugation</b>	Unconjugated
<b>Buffer</b>	PBS with 0.05% Proclin300, 1% protective protein and 50% glycerol, pH7.4

### Applications

### Recommended Dilution

<b>WB</b>	1:500-1:1000
-----------	--------------

### Data



Western blot of Mouse brain with anti-NEFL polyclonal antibody at 1:1000 dilution.

**Observed-MW:69 kDa**

**Calculated-MW:61 kDa**

### Preparation & Storage

<b>Storage</b>	Store at -20°C Valid for 12 months. Avoid freeze / thaw cycles.
<b>Shipping</b>	The product is shipped with ice pack, upon receipt, store it immediately at the temperature recommended.

### Background

Neurofilaments usually contain three intermediate filament proteins: NEFL, NEFM, and NEFH which are involved in the maintenance of neuronal caliber. May additionally cooperate with the neuronal intermediate filament proteins PRPH and INA to form neuronal filamentous networks.