

## HA-Tag Monoclonal Antibody

catalog number: E-AB-48022

**Note:** Centrifuge before opening to ensure complete recovery of vial contents.

### Description

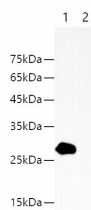
<b>Reactivity</b>	All
<b>Immunogen</b>	Synthetic peptide corresponding to HA tag conjugated to keyhole limpet haemocyanin.
<b>Host</b>	Rabbit
<b>Isotype</b>	IgG
<b>Clone</b>	4F5
<b>Purification</b>	Protein A/G Purification
<b>Conjugation</b>	Unconjugated
<b>Buffer</b>	PBS with 0.05% Proclin300, 1% protective protein and 50% glycerol, pH7.4

### Applications

### Recommended Dilution

<b>WB</b>	1:5000-10000
<b>IF</b>	1:800-1600

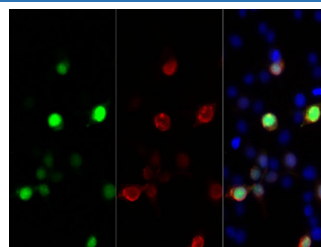
### Data



Western blotting with anti-HA-Tag rabbit monoclonal antibody at dilution of 1:5000. Lane 1: HA tag transfected HEK 293 cell lysates, lane 2: HEK 293 whole cell lysate

**Observed-MW:28 kDa**

**Calculated-MW:28 kDa**



Immunofluorescent analysis of 293F cells transfected with the HA-GFP using anti-HA-Tag rabbit monoclonal Antibody at 1:2000 dilution.

### Preparation & Storage

<b>Storage</b>	Store at -20°C Valid for 12 months. Avoid freeze / thaw cycles.
<b>Shipping</b>	The product is shipped with ice pack, upon receipt, store it immediately at the temperature recommended.

### Background

The HA tag is derived from the HA-molecule corresponding to amino acids 98-106. It has been extensively used as a general epitope tag in expression vectors. Many recombinant proteins have been engineered to express the HA tag, which does not appear to interfere with the bioactivity or the biodistribution of the recombinant protein.