

RSU1 Polyclonal Antibody

catalog number: E-AB-18667

Note: Centrifuge before opening to ensure complete recovery of vial contents.

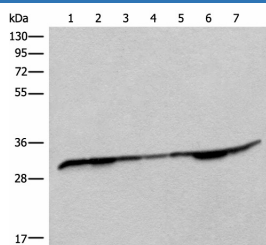
Description

Reactivity	Human;Mouse;Rat
Immunogen	Fusion protein of human RSU1
Host	Rabbit
Isotype	IgG
Purification	Antigen affinity purification
Buffer	Phosphate buffered solution, pH 7.4, containing 0.05% stabilizer and 50% glycerol.

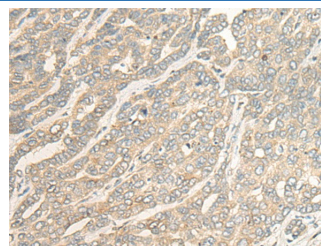
Applications Recommended Dilution

WB	1:500-1:2000
IHC	1:25-1:100

Data



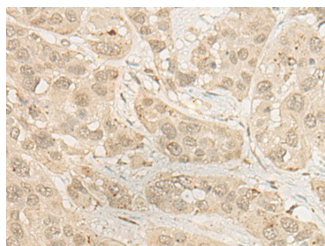
Western blot analysis of Rat heart tissue Mouse heart tissue
Rat brain tissue Mouse brain tissue HEPG2 cell Jurkat and
Lovo cell lysates using RSU1 Polyclonal Antibody at dilution
of 1:400



Immunohistochemistry of paraffin-embedded Human liver
cancer tissue using RSU1 Polyclonal Antibody at dilution of
1:30(×200)

Observed-MV:Refer to figures

Calculated-MV:32 kDa



Immunohistochemistry of paraffin-embedded Human
esophagus cancer tissue using RSU1 Polyclonal Antibody at
dilution of 1:30(×200)

Preparation & Storage

Storage	Store at -20°C Valid for 12 months. A void freeze / thaw cycles.
Shipping	The product is shipped with ice pack,upon receipt,store it immediately at the temperature recommended.

Background

For Research Use Only

This gene encodes a protein that is involved in the Ras signal transduction pathway, growth inhibition, and nerve-growth factor induced differentiation processes, as determined in mouse and human cell line studies. In mouse, the encoded protein was initially isolated based on its ability to inhibit v-Ras transformation. Multiple alternatively spliced transcript variants for this gene have been reported; one of these variants was found only in glioma tumors.

For Research Use Only

Toll-free: 1-888-852-8623
Web: www.elabscience.com

Tel: 1-832-243-6086
Email: techsupport@elabscience.com

Fax: 1-832-243-6017

Rev. V1.6