

MCP-3/CCL7 Monoclonal Antibody

catalog number: AN200217P

Note: Centrifuge before opening to ensure complete recovery of vial contents.

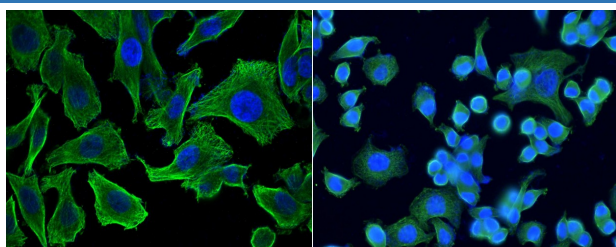
Description

Reactivity	Human
Immunogen	Recombinant Human CCL7/MCP3 protein
Host	Mouse
Isotype	IgG1
Clone	5D5
Purification	Protein A
Buffer	0.2 µm filtered solution in PBS

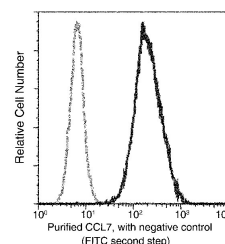
Applications Recommended Dilution

ICC/IF	1:20-1:100
FCM	1:25-1:100

Data



Immunofluorescence analysis of Human CCL7 in SKBR3 cells. Cells were fixed with 4% PFA, permeabilized with 1% Triton X-100 in PBS, blocked with 10% serum, and incubated with Mouse anti-Human CCL7 monoclonal antibody (1:60). Then cells were stained with the Alexa Fluor® 488-conjugated Goat Anti-mouse IgG secondary antibody (left panel, captured by laser confocal scanning microscope; right panel, captured by fluorescence microscope), counterstained with DAPI (blue). Positive staining was localized to cytoplasm.



Flow cytometric analysis of Human CCL7 expression on THP-1 cells. The cells were treated according to manufacturer's manual, stained with purified anti-Human CCL7, then a FITC-conjugated second step antibody. The fluorescence histograms were derived from gated events with the forward and side light-scatter characteristics of intact cells.

Preparation & Storage

Storage	This antibody can be stored at 2°C-8°C for one month without detectable loss of activity. Antibody products are stable for twelve months from date of receipt when stored at -20°C to -80°C. Preservative-Free. Avoid repeated freeze-thaw cycles.
Shipping	Ice bag

Background

This gene encodes monocyte chemotactic protein 3, a secreted chemokine which attracts macrophages during inflammation and metastasis. It is a member of the C-C subfamily of chemokines which are characterized by having two adjacent cysteine residues. The protein is an in vivo substrate of matrix metalloproteinase 2, an enzyme which degrades components of the extracellular matrix. This gene is part of a cluster of C-C chemokine family members on chromosome 17q.

For Research Use Only