

## ITLN1 Polyclonal Antibody

catalog number: E-AB-15143

**Note:** Centrifuge before opening to ensure complete recovery of vial contents.

### Description

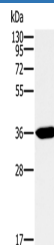
Reactivity	Human;Mouse
Immunogen	Recombinant protein of human ITLN1
Host	Rabbit
Isotype	IgG
Purification	Affinity purification
Conjugation	Unconjugated
Buffer	Phosphate buffered solution, pH 7.4, containing 0.05% stabilizer and 50% glycerol.

### Applications

### Recommended Dilution

WB	1:1000-1:5000
----	---------------

### Data



Western Blot analysis of Human fetal intestine tissue using  
ITLN1 Polyclonal Antibody at dilution of 1:400

**Calculated-MV:35 kDa**

### Preparation & Storage

Storage	Store at -20°C Valid for 12 months. Avoid freeze / thaw cycles.
Shipping	The product is shipped with ice pack, upon receipt, store it immediately at the temperature recommended.

### Background

Intelectin-1 also known as the intestinal lactoferrin receptor is a protein that in humans is encoded by the ITLN1 gene. Intelectin-1 functions both as a receptor for bacterial arabinogalactans and for lactoferrin. Has no effect on basal glucose uptake but enhances insulin-stimulated glucose uptake in adipocytes. Increases AKT phosphorylation in the absence and presence of insulin. May play a role in the defense system against microorganisms. May specifically recognize carbohydrate chains of pathogens and bacterial components containing galactofuranosyl residues, in a calcium-dependent manner.

### For Research Use Only